



Denia

## Apartment close to the beach

Offer ID: 13560

**From 244000 €**

\*Price does not include VAT



Completion date:



### Property Information

**Type:** Apartment

**Number of bathrooms:** 1

**Number of bedrooms:** 1

**Area:** 43.11 m<sup>2</sup>

**City:** Denia



## Property Description

The second phase of the development will include 23 flats with 1, 2 and 3 bedrooms. The development, in a great location, is 1 km from the beach.

The buildings have been designed as compact structures, responding to the architects' and designers' ongoing desire for efficiency in development. Positioned at various key points in the residential area, these decisions ensure that the flats are just the right temperature in both winter and summer.

But undoubtedly the main feature of the flats will be their large terraces. Thanks to their regular proportions, they are ideal spaces for outdoor living. The integration of the living room with these spacious terraces will unify your home as a living space where the inside meets the outside.

Flats with furnished kitchen and bathroom, with built-in air conditioning.



## Advantages



Air conditioning



Shared pool



Balcony/Terrace



Close to the sea



Parking



Gated community



## What is included in the price



Furnished kitchen



Parking space



Shared pool



Air conditioning



Furnished bathroom

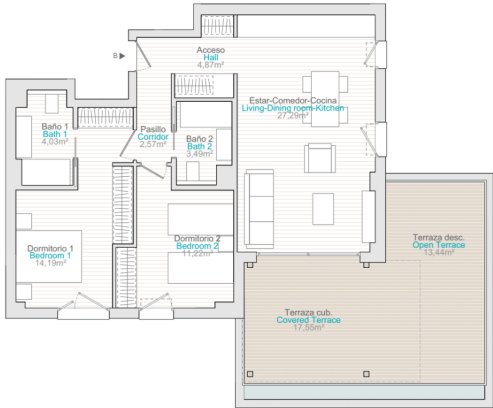
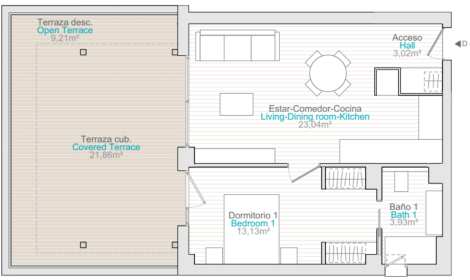


## Gallery

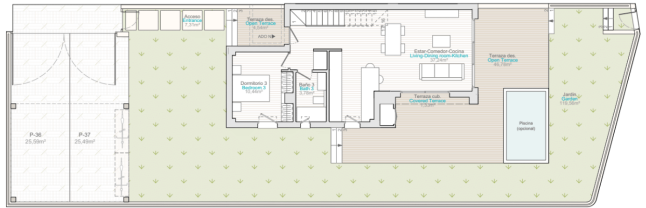








Planta baja | Ground Floor



Planta 1 | Floor 1



Block	Start	Variant	Floor	Door	Apartment	Bedrooms	Bathrooms	Net sq. Apartments	Covered terrace	Open terrace	Solarium	Garden	Total Terrace	Built sqm.	TOTAL PRICE (est. net)	VAT	TOTAL PRICE (est. net)
1	1	0	ADD-A	ADD-A	3	2	215	16.46	1.32	17.09	0	0	18.48	18.48	104,400	12,420	114,420
	1	1	C	RS-1C	2	2	67.34	20.12	0	0	0	0	20.12	76.5	85,000	38,800	436,800
	1	1	D	RS-2D	2	2	67.71	20.12	0	0	0	0	20.12	76.5	85,000	38,800	436,800
	1	1	E	RS-1E	1	1	49.94	12.12	0	0	0	0	12.12	52.97	85,000	38,800	436,800
	1	1	F	RS-1F	1	1	49.94	12.12	0	0	0	0	12.12	52.97	85,000	38,800	436,800
	1	2	A	RS-2A	2	2	65.67	20.12	0	0	0	0	20.12	76.5	85,000	38,800	436,800
	1	2	B	RS-2B	2	2	65.79	20.12	0	0	0	0	20.12	76.5	85,000	38,800	436,800
	1	2	C	RS-2C	2	2	67.34	20.12	0	0	0	0	20.12	76.5	85,000	38,800	436,800
	1	2	D	RS-2D	2	2	67.71	20.12	0	0	0	0	20.12	76.5	85,000	38,800	436,800
	1	2	E	RS-2E	1	1	49.94	12.12	0	0	0	0	12.12	52.97	85,000	38,800	436,800
	1	2	F	RS-2F	1	1	49.94	12.12	0	0	0	0	12.12	52.97	85,000	38,800	436,800
	1	3	A	RS-3A	2	2	65.67	20.12	1.71	0	0	0	21.81	76.5	98,000	38,800	436,800
	1	3	B	RS-3B	2	2	65.79	20.12	0	0	0	0	20.12	76.5	85,000	38,800	436,800
	1	3	C	RS-3C	2	2	67.34	20.12	0	0	0	0	20.12	76.5	85,000	38,800	436,800
	1	3	D	RS-3D	2	2	67.71	20.12	0	0	0	0	20.12	76.5	85,000	38,800	436,800
	1	3	E	RS-3E	1	1	49.94	12.12	0	0	0	0	12.12	52.97	85,000	38,800	436,800
	1	3	F	RS-3F	1	1	49.94	12.12	0	0	0	0	12.12	52.97	85,000	38,800	436,800
	1	4	A	RS-4A	2	2	65.67	20.12	26.91	0	0	0	26.91	76.5	98,000	38,800	436,800
	1	4	B	RS-4B	2	2	65.79	20.12	0	0	0	0	20.12	76.5	85,000	38,800	436,800
	2	2	0	ADD-A	ADD-A	3	2	167.46	1.32	17.09	0	0	0	18.48	18.48	104,400	12,420
2		1	C	RS-1C	2	2	67.34	20.12	0	0	0	0	20.12	76.5	85,000	38,800	436,800
2		1	D	RS-2D	2	2	67.71	20.12	0	0	0	0	20.12	76.5	85,000	38,800	436,800
2		1	E	RS-1E	1	1	49.94	12.12	0	0	0	0	12.12	52.97	85,000	38,800	436,800
2		1	F	RS-1F	1	1	49.94	12.12	0	0	0	0	12.12	52.97	85,000	38,800	436,800
2		2	A	RS-2A	2	2	65.67	20.12	0	0	0	0	20.12	76.5	85,000	38,800	436,800
2		2	B	RS-2B	2	2	65.79	20.12	0	0	0	0	20.12	76.5	85,000	38,800	436,800
2		2	C	RS-2C	2	2	67.34	20.12	0	0	0	0	20.12	76.5	85,000	38,800	436,800
2		2	D	RS-2D	2	2	67.71	20.12	0	0	0	0	20.12	76.5	85,000	38,800	436,800
2		2	E	RS-2E	1	1	49.94	12.12	0	0	0	0	12.12	52.97	85,000	38,800	436,800
2		2	F	RS-2F	1	1	49.94	12.12	0	0	0	0	12.12	52.97	85,000	38,800	436,800
2		3	A	RS-3A	2	2	65.67	20.12	1.71	0	0	0	21.81	76.5	98,000	38,800	436,800
2		3	B	RS-3B	2	2	65.79	20.12	0	0	0	0	20.12	76.5	85,000	38,800	436,800
2		3	C	RS-3C	2	2	67.34	20.12	0	0	0	0	20.12	76.5	85,000	38,800	436,800
2		3	D	RS-3D	2	2	67.71	20.12	0	0	0	0	20.12	76.5	85,000	38,800	436,800
2		3	E	RS-3E	1	1	49.94	12.12	0	0	0	0	12.12	52.97	85,000	38,800	436,800
2		3	F	RS-3F	1	1	49.94	12.12	0	0	0	0	12.12	52.97	85,000	38,800	436,800
2		4	A	RS-4A	2	2	65.67	20.12	26.91	0	0	0	26.91	76.5	98,000	38,800	436,800
2		4	B	RS-4B	2	2	65.79	20.12	0	0	0	0	20.12	76.5	85,000	38,800	436,800
2		4	C	RS-4C	2	2	67.34	20.12	0	0	0	0	20.12	76.5	85,000	38,800	436,800
2	4	D	RS-4D	2	2	67.71	20.12	0	0	0	0	20.12	76.5	85,000	38,800	436,800	
2	4	E	RS-4E	1	1	49.94	12.12	0	0	0	0	12.12	52.97	85,000	38,800	436,800	
2	4	F	RS-4F	1	1	49.94	12.12	0	0	0	0	12.12	52.97	85,000	38,800	436,800	
2	4	G	RS-4G	2	2	65.67	20.12	0	0	0	0	20.12	76.5	85,000	38,800	436,800	
2	4	H	RS-4H	2	2	65.79	20.12	0	0	0	0	20.12	76.5	85,000	38,800	436,800	
2	4	I	RS-4I	2	2	67.34	20.12	0	0	0	0	20.12	76.5	85,000	38,800	436,800	
2	4	J	RS-4J	2	2	67.71	20.12	0	0	0	0	20.12	76.5	85,000	38,800	436,800	
2	4	K	RS-4K	1	1	49.94	12.12	0	0	0	0	12.12	52.97	85,000	38,800	436,800	
2	4	L	RS-4L	1	1	49.94	12.12	0	0	0	0	12.12	52.97	85,000	38,800	436,800	
2	4	M	RS-4M	2	2	65.67	20.12	0	0	0	0	20.12	76.5	85,000	38,800	436,800	
2	4	N	RS-4N	2	2	65.79	20.12	0	0	0	0	20.12	76.5	85,000	38,800	436,800	
2	4	O	RS-4O	2	2	67.34	20.12	0	0	0	0	20.12	76.5	85,000	38,800	436,800	
2	4	P	RS-4P	2	2	67.71	20.12	0	0	0	0	20.12	76.5	85,000	38,800	436,800	
2	4	Q	RS-4Q	1	1	49.94	12.12	0	0	0	0	12.12	52.97	85,000	38,800	436,800	
2	4	R	RS-4R	1	1	49.94	12.12	0	0	0	0	12.12	52.97	85,000	38,800	436,800	
2	4	S	RS-4S	2	2	65.67	20.12	0	0	0	0	20.12	76.5	85,000	38,800	436,800	
2	4	T	RS-4T	2	2	65.79	20.12	0	0	0	0	20.12	76.5	85,000	38,800	436,800	
2	4	U	RS-4U	2	2	67.34	20.12	0	0	0	0	20.12	76.5	85,000	38,800	436,800	
2	4	V	RS-4V	2	2	67.71	20.12	0	0	0	0	20.12	76.5	85,000	38,800	436,800	
2	4	W	RS-4W	1	1	49.94	12.12	0	0	0	0	12.12	52.97	85,000	38,800	436,800	
2	4	X	RS-4X	1	1	49.94	12.12	0	0	0	0	12.12	52.97	85,000	38,800	436,800	
2	4	Y	RS-4Y	2	2	65.67	20.12	0	0	0	0	20.12	76.5	85,000	38,800	436,800	
2	4	Z	RS-4Z	2	2	65.79	20.12	0	0	0	0	20.12	76.5	85,000	38,800	436,800	
2	4	AA	RS-4AA	2	2	67.34	20.12	0	0	0	0	20.12	76.5	85,000	38,800	436,800	
2	4	AB	RS-4AB	2	2	67.71	20.12	0	0	0	0	20.12	76.5	85,000	38,800	436,800	
2	4	AC	RS-4AC	1	1	49.94	12.12	0	0	0	0	12.12	52.97	85,000	38,800	436,800	
2	4	AD	RS-4AD	1	1	49.94	12.12	0	0	0	0	12.12	52.97	85,000	38,800	436,800	
2	4	AE	RS-4AE	2	2	65.67	20.12	0	0	0	0	20.12	76.5	85,000	38,800	436,800	
2	4	AF	RS-4AF	2	2	65.79	20.12	0	0	0	0	20.12	76.5	85,000	38,800	436,800	
2	4	AG	RS-4AG	2	2	67.34	20.12	0	0	0	0	20.12	76.5	85,000	38,800	436,800	
2	4	AH	RS-4AH	2	2	67.71	20.12	0	0	0	0	20.12	76.5	85,000	38,800	436,800	
2	4	AI	RS-4AI	1	1	49.94	12.12	0	0	0	0	12.12	52.97	85,000	38,800	436,800	
2	4	AJ	RS-4AJ	1	1	49.94	12.12	0	0	0	0	12.12	52.97	85,000	38,800	436,800	
2	4	AK	RS-4AK	2	2	65.67	20.12	0	0	0	0	20.12	76.5	85,000	38,800	436,800	
2	4	AL	RS-4AL	2	2	65.79	20.12	0	0	0	0	20.12	76.5	85,000	38,800	436,800	
2	4	AM	RS-4AM	2	2	67.34	20.12	0	0	0	0	20.12	76.5	85,000	38,800	436,800	
2	4	AN	RS-4AN	2	2	67.71	20.12	0	0	0	0	20.12	76.5	85,000	38,800	436,800	
2	4	AO	RS-4AO	1	1	49.94	12.12	0	0	0	0	12.12	52.97	85,000	38,800	436,800	
2	4	AP	RS-4AP	1	1	49.94	12.12	0	0	0	0	12.12	52.97	85,000	38,800	436,800	
2	4	AQ	RS-4AQ	2	2	65.67	20.12	0	0	0	0	20.12	76.5	85,000	38,800	436,800	
2	4	AR	RS-4AR	2	2	65.79	20.12	0	0	0	0	20.12	76.5	85,000	38,800	436,800	
2	4	AS	RS-4AS	2	2	67.34	20.12	0	0	0	0	20.12	76.5	85,000	38,800	436,800	
2	4	AT	RS-4AT	2	2	67.71	20.12	0	0	0	0	20.12	76.5	85,000	38,800	436,800	
2	4	AU	RS-4AU	1	1	49.94	12.12	0	0	0	0	12.12	52.97	85,000	38,800	436,800	
2	4	AV	RS-4AV	1	1	49.94	12.12	0	0	0	0	12.12	52.97	85,000	38,800	436,800	
2	4	AW	RS-4AW	2	2	65.67	20.12	0	0	0	0	20.12	76.5	85,000	38,800	436,800	
2	4	AX	RS-4AX	2	2	65.79	20.12	0	0	0	0	20.12	76.5	85,000	38,800	436,800	
2	4	AY	RS-4AY	2	2	67.34	20.12	0	0	0	0	20.12	76.5	85,000	38,800	436,800	
2	4	AZ	RS-4AZ	2	2	67.71											

**Kasia Wabia**

**Aria Home Invest S.L.U**

☎ +48 601 56 88 44

☎ +34 674 427 308

✉ hello@ariaspain.com

🌐 www.ariaspain.com

**ARIA**  
— SPAIN —

