



Casares

Apartment in Casares

Offer ID: 24006

From 333000 €

*Price does not include VAT



Completion date:
2nd quarter 2025



Property Information

Type: Apartment

Number of bathrooms: 2

Number of bedrooms: 2

Area: 79.97 m²

City: Casares



Property Description

A complex of 47 flats with 1, 2 and 3 bedrooms. Each flat has a garage and storage unit.

Gated estate with swimming pool, gardens and children's playground. The design of this development successfully integrates the structure with its surroundings, taking full advantage of the topography of the plot to allow breathtaking 360° views of the sea and mountains.

All flats have equipped kitchens, large terraces and high-end features such as hot water via atherothermal and pre-installation of electric vehicle charging. Ground floor flats with private garden.

Camarate Hills is located in Casares, next to the Sierra Bermeja nature park and a short distance from the picturesque towns of Manilva and Estepona.

Casares is one of Andalusia's most charming white villages, nestled between the sea and the mountains. It perfectly combines more than 2,000 metres of sandy beach and clear waters for bathers, surrounded by golf courses and for hikers, the Sierra Bermeja.

Just 6 minutes from the prestigious Finca Cortesin Golf Club, as well as other nearby golf courses such as Sotogrande, Estepona and Marbella, make the golf offer very attractive.



Advantages



Near golf courses



Air conditioning



Shared pool



Balcony/Terrace



Close to the sea



Parking



Elevator



Garage



Gated community



What is included in the price



Furnished kitchen



Parking space



Storage room



Shared pool



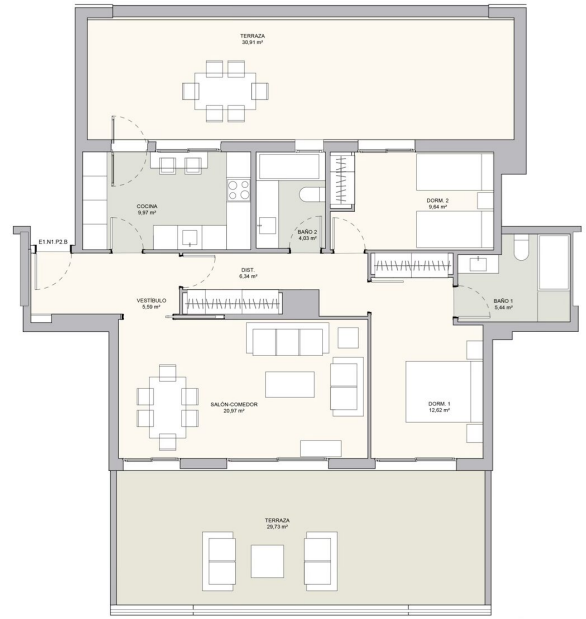
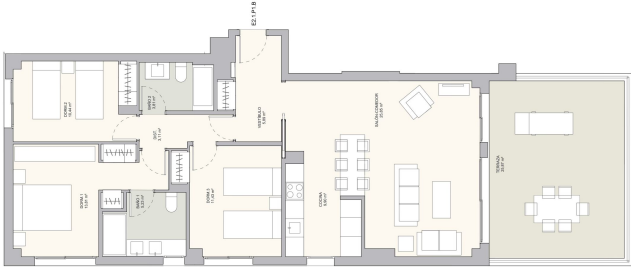
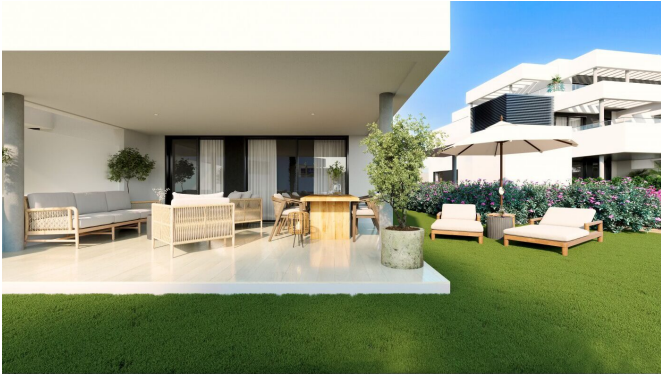
Air conditioning



Furnished bathroom



Gallery



BLOQUE	ESCALERA	PLANTA	LETRA	TIPO	Dormitorios	Baños	Sup. Útil	Sup. Const.	Terrazs	Jardín	ESC.	PLANTA	Garaje Nº	Trastero Nº	PVP
EDIFICIO 1	1	2	B	Tipo 5	2	2	74,60	102,64	45,64		2	-1	4	2	390.000 €
EDIFICIO 1	2	0	B	Tipo 2	2	2	79,97	110,03	43,28		1	-1	5	3	333.000 €
EDIFICIO 2	1	1	B	Tipo 2	3	2	89,47	120,82	25,87		1	-1	7	5	360.000 €
EDIFICIO 2	1	2	A	Tipo 5	2	2	65,57	88,46	43,63		1	-1	10	8	350.000 €

Kasia Wabia

Aria Home Invest S.L.U

 +48 601 56 88 44

 +34 674 427 308

 hello@ariarealestate.eu

 www.ariarealestate.eu

