



Dolores
Apartment in Dolores

Offer ID: 8296

From 249900 €

*Price does not include VAT



Completion date:
June 2026



Property Information

Type: Apartment

Number of bathrooms: 2

Number of bedrooms: 3

Area: 76.50 m²

City: Dolores



Property Description

The flats are located in Dolores (Alicante), a privileged area of the Costa Blanca, next to the El Hondo Natural Park, surrounded by nature and equipped with all services. 25 minutes from Alicante airport, close to the beautiful beaches of Guardamar del Segura and a few minutes from the main golf courses in the area. The excellent location makes the estate an ideal option for those seeking tranquillity.



Advantages



Near golf courses



Air conditioning



Shared pool



Balcony/Terrace



Parking



Garden



Solarium



Gated community



What is included in the price



Furnished kitchen



Parking space



Shared pool



Smarthome



Pre-installed air conditioning

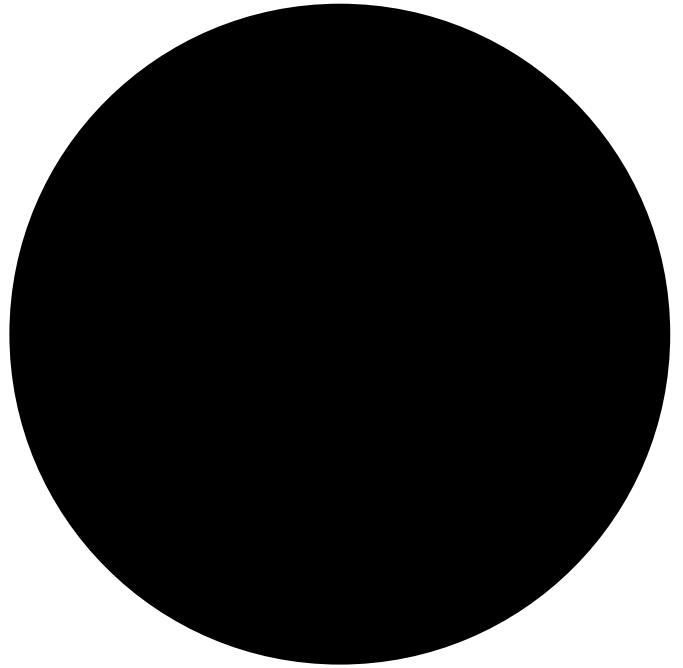


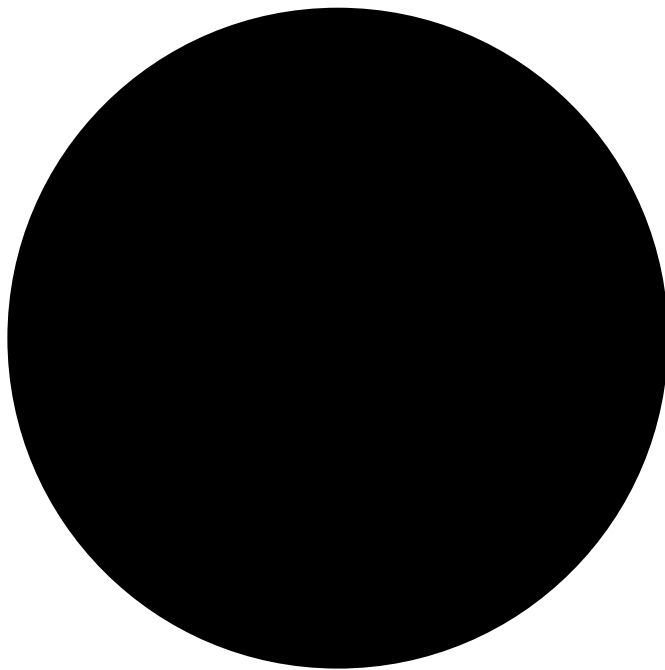
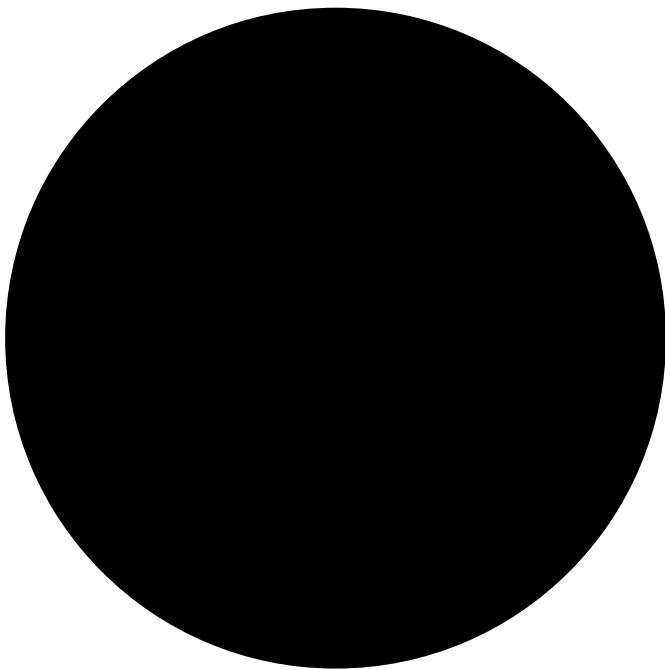
Furnished bathroom



Gallery







NOTA: Las superficies y dimensiones de este plano pueden ser sometidas a modificaciones durante la obra, no teniendo valor contractual.

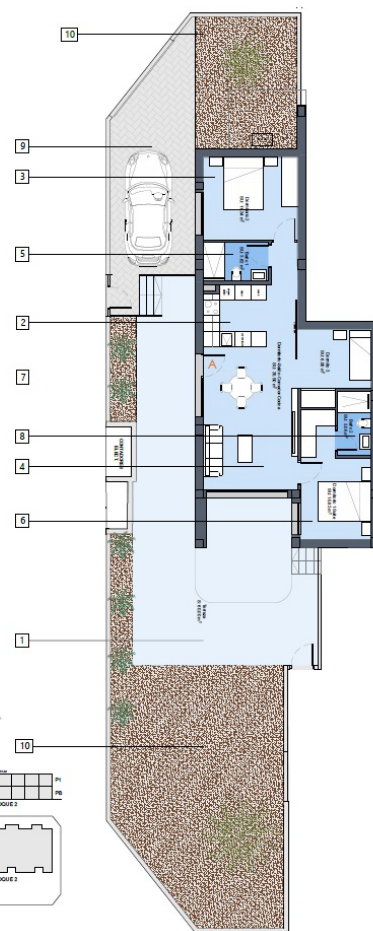
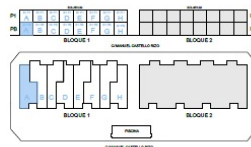
PLANO RESERVA B1 PB-A

Vivienda/ Housing.....79,10 m²
Terraza/ Terrace.....176,00 m²

3 dormitorios / bedroom

1. Terraza / Terrace
2. Cocina / Kitchen
3. Dormitorio 2 / Bedroom 2
4. Sal3n / Living room
5. Ba3o 1 / Bathroom 1
6. Dormitorio 1 / Bedroom 1
7. Dormitorio 3 / Bedroom 3
8. Ba3o 2 / Bathroom 2
9. Aparcaminto / Parking
10. Jard3n / Garden

PLANTA BAJA



NOTA: Las superficies y dimensiones de este plano pueden ser sometidas a modificaciones durante la obra, no teniendo valor contractual.

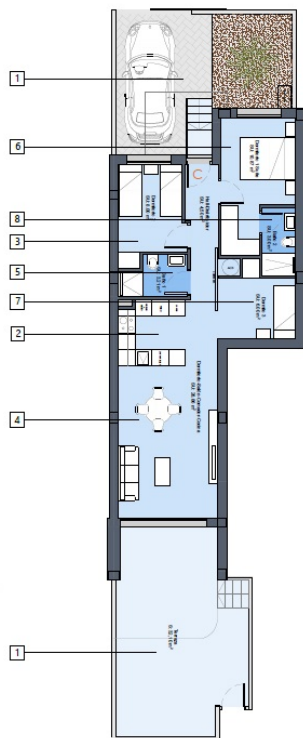
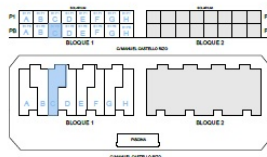
PLANO RESERVA B1 PB-C

Vivienda/ Housing.....76,50 m²
Terraza/ Terrace.....59,00 m²

3 dormitorios / bedroom

1. Terraza / Terrace
2. Cocina / Kitchen
3. Dormitorio 2 / Bedroom 2
4. Salón / Living room
5. Baño 1 / Bathroom 1
6. Dormitorio 1 / Bedroom 1
7. Dormitorio 3 / Bedroom 3
8. Baño 2 / Bathroom 2

PLANTA BAJA



NOTA: Las superficies y dimensiones de este plano pueden ser sometidas a modificaciones durante la obra, no teniendo valor contractual.

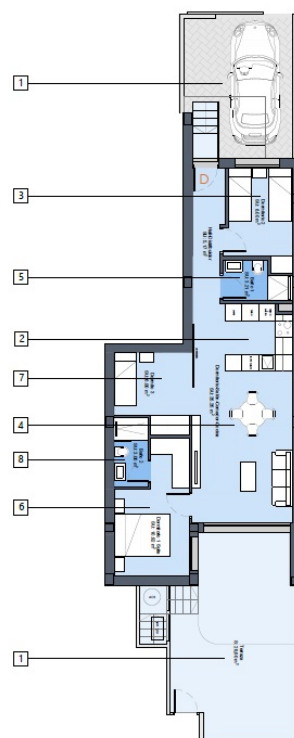
PLANO RESERVA B1 PB-D

Vivienda/ Housing.....76,70 m²
Terraza/ Terrace.....48,50 m²

3 dormitorios / bedroom

1. Terraza / Terrace
2. Cocina / Kitchen
3. Dormitorio 2 / Bedroom 2
4. Salón / Living room
5. Baño 1 / Bathroom 1
6. Dormitorio 1 / Bedroom 1
7. Dormitorio 3 / Bedroom 3
8. Baño 2 / Bathroom 2

PLANTA BAJA



NOTA: Las superficies y dimensiones de este plano pueden ser sometidas a modificaciones durante la obra, no teniendo valor contractual.

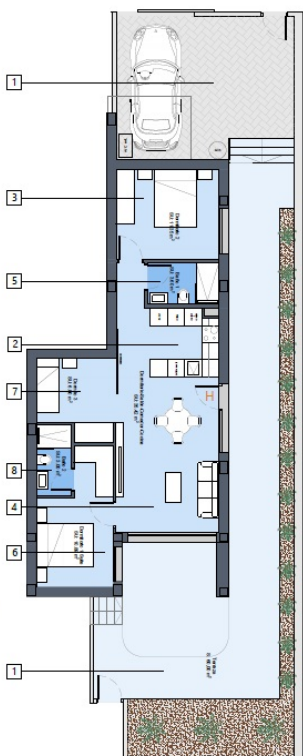
PLANO RESERVA B1 PB-H

Vivienda/ Housing.....79,10 m²
Terraza/ Terrace.....109,50 m²

3 dormitorios / bedroom

1. Terraza / Terrace
2. Cocina / Kitchen
3. Dormitorio 2 / Bedroom 2
4. Salón / Living room
5. Baño 1 / Bathroom 1
6. Dormitorio 1 / Bedroom 1
7. Dormitorio 3 / Bedroom 3
8. Baño 2 / Bathroom 2

PLANTA BAJA



NOTA: Las superficies y dimensiones de este plano pueden ser sometidas a modificaciones durante la obra, no teniendo valor contractual.

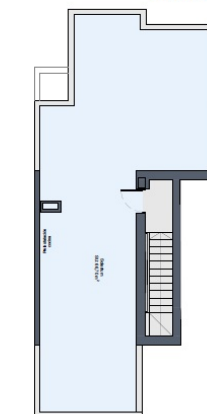
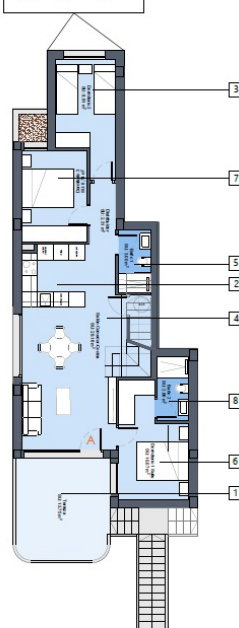
PLANO RESERVA B1 P1-A

Vivienda/ Housing.....90,80 m²
Terraza/ Terrace.....13,75 m²
Solarium/Solarium.....66,70 m²

3 dormitorios / bedroom

1. Terraza / Terrace
2. Cocina / Kitchen
3. Dormitorio 2 / Bedroom 2
4. Salón / Living room
5. Baño 1 / Bathroom 1
6. Dormitorio 1 / Bedroom 1
7. Dormitorio 3 / Bedroom 3
8. Baño 2 / Bathroom 2

PLANTA PRIMERA

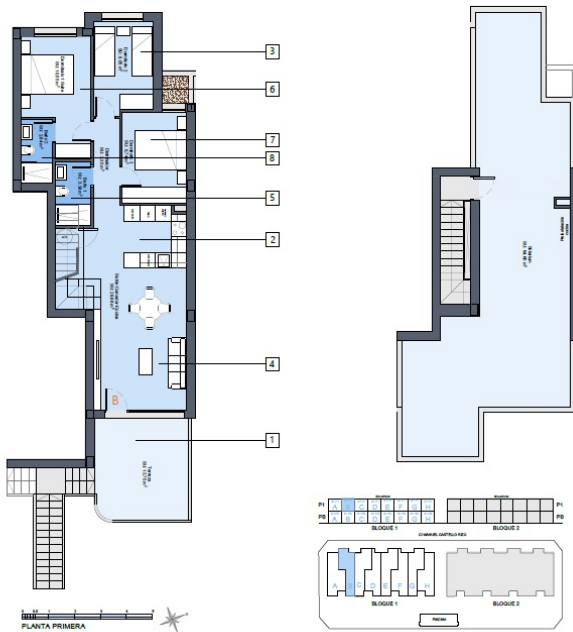


NOTA: Las superficies y dimensiones de este plano pueden ser sometidas a modificaciones durante la obra, no teniendo valor contractual.

PLANO RESERVA B1 P1-B

Vivienda/ Housing.....90,80 m²
Terraza/ Terrace.....13,75 m²
Solarium/Solarium.....64,60 m²
3 dormitorios / bedroom

1. Terraza / Terrace
2. Cocina / Kitchen
3. Dormitorio 2 / Bedroom 2
4. Sal3n / Living room
5. Ba3o 1 / Bathroom 1
6. Dormitorio 1 / Bedroom 1
7. Dormitorio 3 / Bedroom 3
8. Ba3o 2 / Bathroom 2

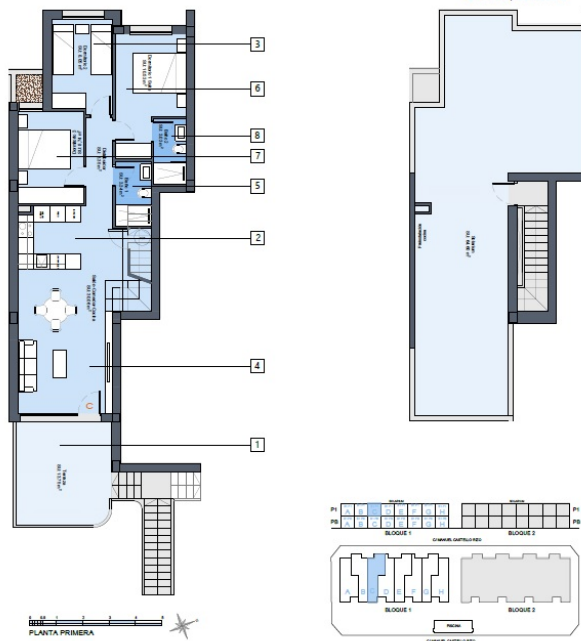


NOTA: Las superficies y dimensiones de este plano pueden ser sometidas a modificaciones durante la obra, no teniendo valor contractual.

PLANO RESERVA B1 P1-C

Vivienda/ Housing.....90,80 m²
Terraza/ Terrace.....13,75 m²
Solarium/Solarium.....64,60 m²
3 dormitorios / bedroom

1. Terraza / Terrace
2. Cocina / Kitchen
3. Dormitorio 2 / Bedroom 2
4. Sal3n / Living room
5. Ba3o 1 / Bathroom 1
6. Dormitorio 1 / Bedroom 1
7. Dormitorio 3 / Bedroom 3
8. Ba3o 2 / Bathroom 2



Block	Floor	Apt.	SQM2 Apt.	SQM2 Terrace	SQM2 Solarium	Rooms	Baths	Storage	Parking	Price	Delivery
1	PB	A	79.10 m ²	176.00 m ²	---	3	2	---	YES	279.900 €	jun-26
		B	76.50 m ²	60.20 m ²	---	3	2	YES	YES	249.900 €	jun-26
		C	76.50 m ²	59.00 m ²	---	3	2	---	YES	249.900 €	jun-26
		D	76.70 m ²	48.50 m ²	---	3	2	YES	YES	249.900 €	jun-26
		E	76.50 m ²	58.20 m ²	---	3	2	---	YES	249.900 €	jun-26
		F	76.70 m ²	47.50 m ²	---	3	2	YES	YES	249.900 €	jun-26
		G	76.50 m ²	59.00 m ²	---	3	2	YES	YES	249.900 €	jun-26
		H	79.10 m ²	106.50 m ²	---	3	2	---	YES	269.900 €	jun-26
	P1	A	90.80 m ²	13.75 m ²	66.70 m ²	3	2	YES (1)	YES (1)	289.900 €	jun-26
		B	90.80 m ²	13.75 m ²	64.60 m ²	3	2	YES (2)	YES (2)	259.900 €	jun-26
		C	90.80 m ²	13.75 m ²	64.60 m ²	3	2	YES (3)	YES (3)	259.900 €	jun-26
		D	90.80 m ²	13.75 m ²	64.60 m ²	3	2	YES (4)	YES (4)	259.900 €	jun-26
		E	90.80 m ²	13.75 m ²	64.60 m ²	3	2	YES (5)	YES (5)	259.900 €	jun-26
		F	90.80 m ²	13.75 m ²	64.60 m ²	3	2	YES (6)	YES (6)	259.900 €	jun-26
		G	90.80 m ²	13.75 m ²	64.60 m ²	3	2	YES (7)	YES (7)	259.900 €	jun-26
		H	90.80 m ²	13.75 m ²	66.70 m ²	3	2	YES (8)	YES (8)	279.900 €	jun-26

All the prices includes: Electric shutters in bedrooms, electric hob and extractor fan in the kitchen, full finished bathrooms, and inside and outside illumination.

JOHNSON APPLIANCES, JOHNSON AIR- CONDITIONING AND FURNITURE PACK INCLUDED

INCLUDED: Community Pool and common areas.

Kasia Wabia

Aria Home Invest S.L.U

+48 601 56 88 44

+34 674 427 308

hello@ariaspain.com

www.ariaspain.com

ARIA

— SPAIN —

Miembro de:
api

RAICV
4123

