



Orihuela Costa
Apartment in Orihuela Costa
Offer ID: 28086

From 490000 €

*Price does not include VAT



Completion date:



Property Information

Type: Apartment

Number of bathrooms: 3

Number of bedrooms: 4

Area: 122.10 m²

City: Orihuela Costa



Property Description

A new, exclusive apartment complex being built in picturesque Playa Flamenca, just 400 metres from the beach. It offers elegant flats with 2, 3 or 4 bedrooms and 2 or 3 bathrooms. Each flat has a spacious living room connected to a modern, open-plan kitchen, and large sliding windows lead to a sunny terrace. The penthouses are distinguished by their high standard of finish and impressive private roof terrace, ideal for relaxation.

The entire complex is designed in a tropical style, providing residents with access to three swimming pools, including one heated, as well as beautifully landscaped green areas. Residents will also have access to a bowling alley, a gym and numerous relaxation and leisure areas.

This is a charming development on the Mediterranean coast, located in the southern part of the province of Alicante, about 4 km south of Torrevieja. The area is famous for its three picturesque sandy beaches with crystal clear waters and atmospheric Spanish beach bars. There is a rich infrastructure close to the complex - numerous restaurants, bars and shops.



Advantages



Shared pool



Balcony/Terrace



Close to the sea



Parking



Elevator



Garage



Gated community



What is included in the price



Furnished kitchen



Parking space



Storage room



Shared pool



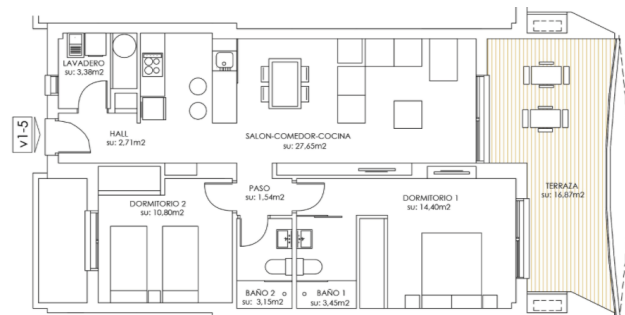
Pre-installed air conditioning

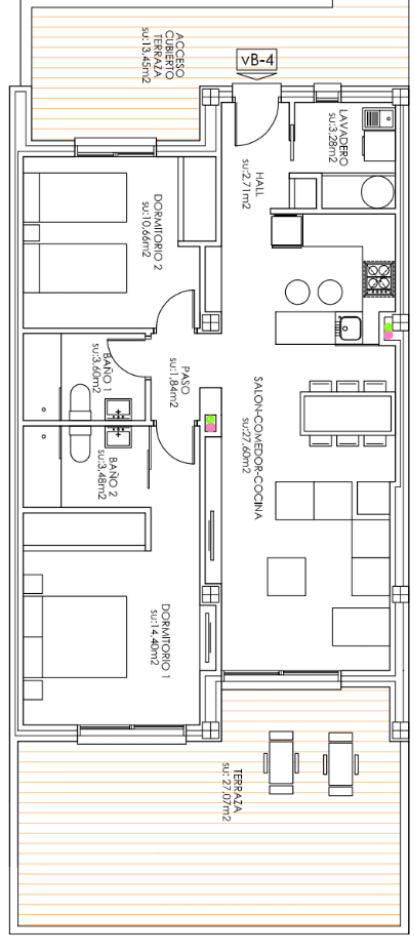
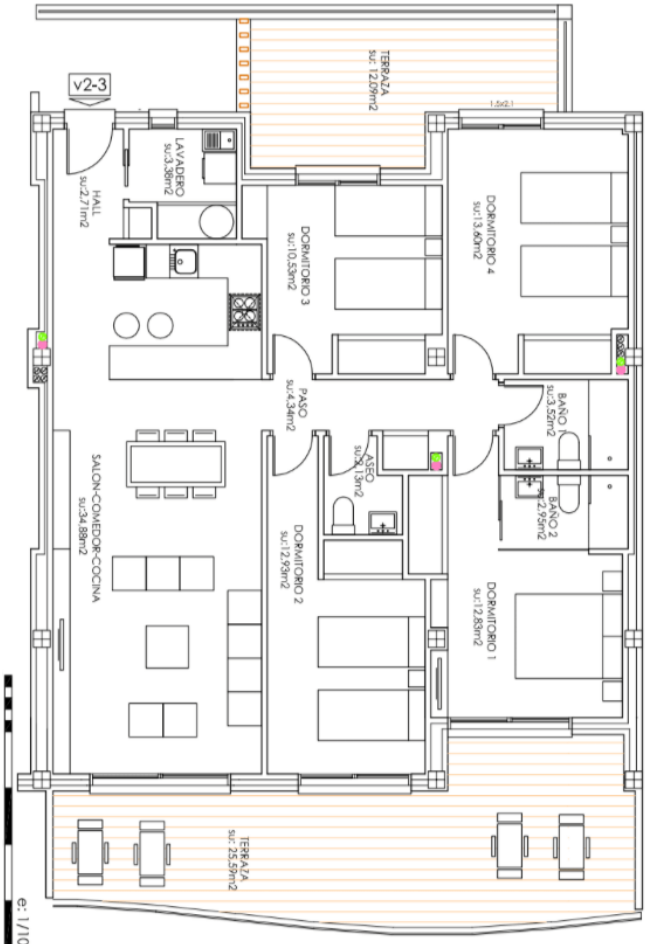


Furnished bathroom

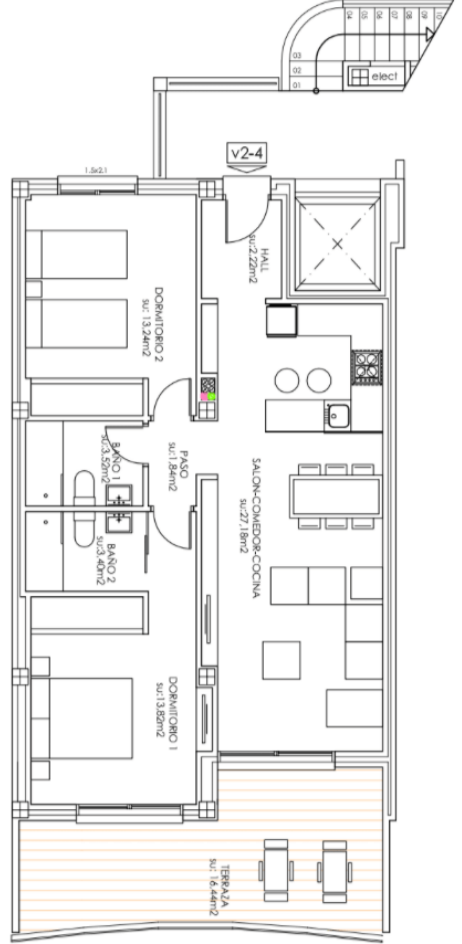


Gallery





BLOQUE 2															
FLOOR	STAIRS	Nº	TYPE	BED/ BATH	UTILITY ROOM	AREAS	COMMON	TERRACE	SOLARIUM	M	TOTAL AREA	GARAGE m²	Size LxW	STORAGE	PRICE
BLOQ 1 2º FLOOR	E1	23	V2-3	2/2	NO	73,3	6,46	16,88	0	90,18	E2-17	4,5x2,5	SI	PILOTO	
-1 FLOOR	E2										24	4,5x3,5	No	13.000 €	
GROUND FLOOR	E1	37	VB-1	3/2	YES	99,25	8,11	46,26	No	145,51	10	4,5x2,5	SI		
		38	VB-2	2/2	NO	73,55	6,01	33,78	No	107,33	8	4,5x2,5	SI	380.000 €	
		39	VB-3	2/2	YES	77,69	6,34	39,59	No	117,28	3	4,5x2,5	SI		
	E2	40	VB-4	2/2	YES	80,33	6,56	40,52	No	120,85	4	4,5x2,5	SI	420.000 €	
		41	VB-5	2/2	NO	77,78	6,07	31,18	No	108,96	12	4,5x2,5	SI	399.000 €	
		42	VB-6	2/2	YES	77,58	6,34	36,59	No	114,17	6	4,5x2,5	SI		
		43	VB-7	3/2	YES	101,28	8,27	23,82	No	125,10	7	4,5x2,5	SI		
FIRST FLOOR	E1	44	V1-1	4/3	YES	119,41	9,76	35,23	No	154,64	5	4,5x3,0	SI		
		45	V1-2	3/2	YES	97,04	7,92	14,70	No	111,74	9	4,5x2,5	SI		
		46	V1-3	4/3	YES	120,91	9,89	36,40	No	157,31	14	4,5x2,5	SI		
	E2	47	V1-4	2/2	NO	77,69	6,07	18,88	No	96,57	15	4,5x2,5	SI	390.000 €	
		48	V1-5	2/2	YES	78,05	6,38	16,51	No	94,56	16	4,5x2,5	SI		
		49	V1-6	3/2	YES	100,88	8,23	46,07	No	146,95	18	4,5x2,5	SI		
SECOND FLOOR	E1	50	V2-1	4/3	YES	119,41	9,76	36,30	No	155,71	1	4,5x3,0	SI		
		51	V2-2	3/2	YES	97,04	7,92	14,63	No	111,67	20	4,5x2,5	SI		
		52	V2-3	4/3	YES	120,91	9,89	25,59	No	146,50	23	4,5x2,5	SI	490.000 €	
	E2	53	V2-4	2/2	NO	77,69	6,07	16,44	No	94,13	17	4,5x2,5	SI	385.000 €	
		54	V2-5	2/2	YES	78,05	6,38	18,55	No	96,60	21	4,5x2,5	SI		
		55	V2-6	3/2	YES	100,88	8,23	46,07	No	146,95	22	4,5x2,5	SI		
PENT HOUSE	E1	56	VAT-1	4/3	YES	147,74	12,09	62,64	118,15	328,63	19	4,5x3,0	SI		
		57	VAT-2	3/2	YES	118,06	9,65	78,93	90,5	287,49	13	4,5x3,0	SI		
	E2	58	VAT-3	3/2	YES	102,18	8,34	40,73	84,62	227,53	11	4,5x3,0	SI		
		59	VAT-4	3/2	YES	116,28	9,52	63,45	91,03	270,76	2	4,5x3,0	SI		



BLOQUE 3														
FLOOR	STAIRS	N°	TYPE	BED/ BATH	UTILITY ROOM	AREAS	COMMO N	TERRA CE	SOLAR IUM	TOTAL AREA	GARA GE m²	Size: LxW	STORA GE	PRICE
-1 FLOOR	E1										14	5x3,1	NO	14.500 €
	E2										R1	6,1x2,7	NO	15.500 €
GROUND FLOOR	E1	60	VB-1	3/2	YES	99,25	8,44	21,69	No	129,38	3	4,7x2,6	Si	395.000 €
		61	VB-2	2/2	NO	73,55	6,25	33,49	No	113,29	7	4,7x3,1	Si	
		62	VB-3	2/2	YES	77,69	6,60	38,15	No	122,44	9	4,7x3,1	Si	340.000 €
		63	VB-4	2/2	YES	80,33	6,83	40,37	No	127,53	11	4,7x3,1	Si	
	E2	64	VB-5	2/2	YES	82,89	7,05	36,39	No	126,33	24	5x3,1	Si	355.000 €
		65	VB-6	2/2	YES	77,86	6,62	38,79	No	123,27	29	5x3,1	Si	
		66	VB-7	2/2	NO	73,30	6,23	33,75	No	113,28	22	5x3,1	Si	325.000 €
		67	VB-8	2/2	YES	77,70	6,61	38,61	No	122,92	30	5x3,1	Si	339.000 €
		68	VB-9	3/2	YES	100,61	8,55	41,65	No	150,81	19	4,7x3	Si	419.000 €
FIRST FLOOR	E1	69	V1-1	4/3	YES	119,41	10,15	39,62	No	169,18	5	4,7x3,3	Si	515.000 €
		70	V1-2	3/2	YES	94,57	8,04	17,60	No	120,21	8	5x3,1	Si	400.000 €
		71	V1-3	4/3	YES	122,10	10,38	34,79	No	167,27	6	5x3,1	Si	505.000 €
		72	V1-4	2/2	YES	82,89	7,05	18,77	No	108,71	13	4,7x3,1	Si	355.000 €
	E2	73	V1-5	2/2	YES	77,70	6,61	16,87	No	101,18	16	5x3,1	Si	335.000 €
		74	V1-6	2/2	NO	73,30	6,23	19,13	No	98,66	18	5x3,1	Si	
		75	V1-7	2/2	YES	77,70	6,61	16,96	No	101,27	20	5x3,1	Si	338.000 €
		76	V1-8	3/2	YES	100,61	8,55	46,10	No	155,26	28	5x3,1	Si	
SECOND FLOOR	E1	77	V2-1	4/3	YES	119,41	10,15	40,69	No	170,25	4	5x2,7	Si	
		78	V2-2	3/2	YES	94,57	8,04	17,71	No	120,32	10	5x3,1	Si	
		79	V2-3	4/3	YES	122,10	10,38	36,71	No	169,19	12	5x3,1	Si	525.000 €
		80	V2-4	2/2	YES	82,89	7,05	16,50	No	106,44	15	4,7x3,1	Si	365.000 €
	E2	81	V2-5	2/2	YES	77,70	6,61	19,10	No	103,41	17	4,7x3,1	Si	
		82	V2-6	2/2	NO	73,30	6,23	16,86	No	96,39	23	4,7x3,1	Si	
		83	V2-7	2/2	YES	77,70	6,61	19,10	No	103,41	25	4,7x2,7	Si	
		84	V2-8	3/2	YES	100,61	8,55	46,10	No	155,26	26	5x3,1	Si	
PENT HOUSE	E1	85	VAT-1	4/3	YES	147,76	12,56	62,28	117,15	339,75	2	5x4	Si	
		86	VAT-2	3/2	YES	118,06	10,04	81,63	96,17	305,90	1	4,7x3,5	Si	
		87	VAT-3	3/2	YES	116,06	9,87	34,06	85,63	245,62	27	4,7x3,9	Si	
	E2	88	VAT-4	3/2	YES	98,62	8,38	40,02	91,95	238,97	R2	5x3,8	Si	
		89	VAT-5	4/3	YES	138,50	11,37	85,40	101,32	336,59	21	4,7x3,3	Si	

Kasia Wabia

Aria Home Invest S.L.U

+48 601 56 88 44

+34 674 427 308

hello@ariaspain.com

www.ariaspain.com

ARIA
— SPAIN —

