



San Pedro del Pinatar
Apartment in San Pedro del Pinatar

Offer ID: 15064

From 276900 €

*Price does not include VAT



Completion date:



Property Information

Type: Apartment

Number of bathrooms: 2

Number of bedrooms: 3

Area: 133.30 m²

City: San Pedro del Pinatar



Property Description

Modern flats in San Pedro del Pinatar ranging from 86 to 140 m². Each one offers 2 or 3

spacious bedrooms and 2 bathrooms fully equipped. Large terraces (15-50 m²) allow you to enjoy the sun. Some flats have access to private gardens of 15-25 m² or a solarium.

The flats are designed with comfort in mind - with pre-installed air conditioning, indoor and outdoor lighting. As an added bonus, there is access to a swimming pool as well as storage cells and underground parking spaces.

San Pedro del Pinatar, located on the picturesque Costa Calida, offers all amenities such as shops, bars and supermarkets, as well as proximity to the beautiful beaches of the Mar Menor (3 km). The warm climate with an average temperature of 18°C and more than 315 days of sunshine a year makes this an excellent place to live.



Advantages



Shared pool



Parking



Elevator



Garden



Garage



Gated community



What is included in the price



Parking space



Storage room



Shared pool



Garden



Pre-installed air conditioning

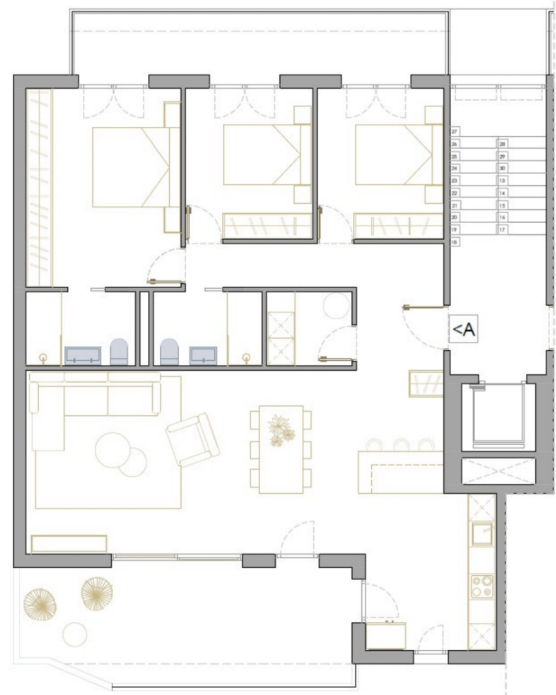
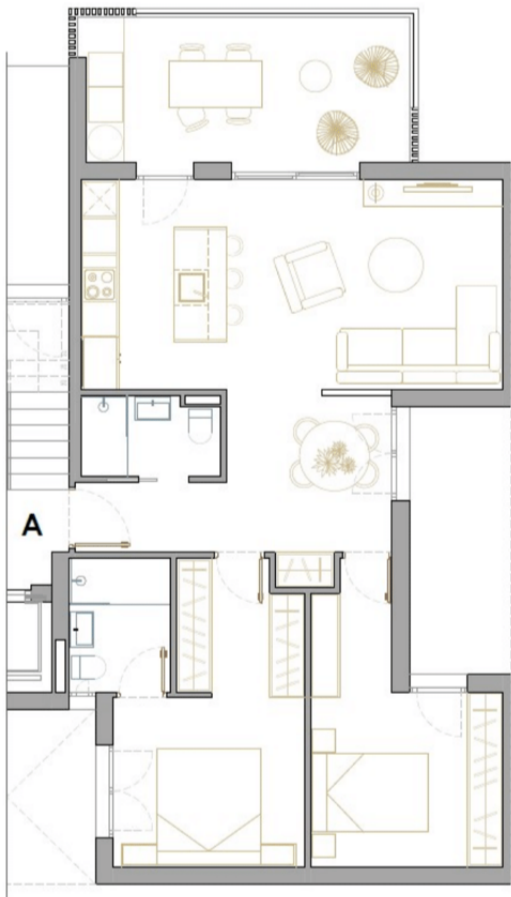


Furnished bathroom



Gallery







PODIO 1	PLANTA FLOOR	DORMITORIOS BEDROOMS	BAÑOS BATHS	SIP CONST. BUILT AREA	TERRAZA TERRACE	JARDIN GARDEN	SOLARIUM SOLARIUM	APARCAMIENTO CAR PARK	TRASTERO WAREHOUSE	PRECIO PRICE
1	B1-V1-A PLANTA BAJA GROUND FLOOR	3	2	133,30	15,60	15,00	-	SÓTANO BASEMENT	SÓTANO BASEMENT	276.900,00 €
2	B1-V2-B PLANTA BAJA GROUND FLOOR	3	2	140,15	19,15	15,00	-	SÓTANO BASEMENT	SÓTANO BASEMENT	281.900,00 €
3	B1-V3-A PLANTA PRIMERA FIRST FLOOR	3	2	133,30	33,85	-	-	SÓTANO BASEMENT	SÓTANO BASEMENT	281.900,00 €
4	B1-V4-B PLANTA PRIMERA FIRST FLOOR	3	2	133,30	47,90	-	-	SÓTANO BASEMENT	SÓTANO BASEMENT	289.900,00 €
5	B1-V5-A PLANTA SEGUNDA SECOND FLOOR	3	2	133,30	29,50	-	-	SÓTANO BASEMENT	SÓTANO BASEMENT	289.900,00 €
6	B1-V6-B PLANTA SEGUNDA SECOND FLOOR	3	2	133,30	45,65	-	-	SÓTANO BASEMENT	SÓTANO BASEMENT	299.900,00 €
7	B1-V7-A PLANTA ATICO PENTHOUSE	3	2	133,30	29,50	-	50,00	SÓTANO BASEMENT	SÓTANO BASEMENT	309.900,00 €
8	B1-V8-B PLANTA ATICO PENTHOUSE	3	2	133,30	45,65	-	50,00	SÓTANO BASEMENT	SÓTANO BASEMENT	322.900,00 €

PODIO 2	PLANTA FLOOR	DORMITORIOS BEDROOMS	BAÑOS BATHS	SIP CONST. BUILT AREA	TERRAZA TERRACE	JARDIN GARDEN	SOLARIUM SOLARIUM	APARCAMIENTO CAR PARK	TRASTERO WAREHOUSE	PRECIO PRICE
9	B2-V1-A PLANTA BAJA GROUND FLOOR	3	2	140,15	19,15	15,00	-	SÓTANO BASEMENT	SÓTANO BASEMENT	281.900,00 €
10	B2-V2-B PLANTA BAJA GROUND FLOOR	3	2	133,30	14,15	15,00	-	SÓTANO BASEMENT	SÓTANO BASEMENT	281.900,00 €
11	B2-V3-A PLANTA PRIMERA FIRST FLOOR	3	2	133,30	47,10	-	-	SÓTANO BASEMENT	SÓTANO BASEMENT	289.900,00 €
12	B2-V4-B PLANTA PRIMERA FIRST FLOOR	3	2	135,85	33,60	-	-	SÓTANO BASEMENT	SÓTANO BASEMENT	287.900,00 €
13	B2-V5-A PLANTA SEGUNDA SECOND FLOOR	3	2	133,30	45,65	-	-	SÓTANO BASEMENT	SÓTANO BASEMENT	298.900,00 €
14	B2-V6-B PLANTA SEGUNDA SECOND FLOOR	3	2	135,85	29,25	-	-	SÓTANO BASEMENT	SÓTANO BASEMENT	292.900,00 €
15	B2-V7-A PLANTA ATICO PENTHOUSE	3	2	133,30	29,50	-	50,00	SÓTANO BASEMENT	SÓTANO BASEMENT	322.900,00 €
16	B2-V8-B PLANTA ATICO PENTHOUSE	3	2	127,50	36,05	-	50,00	SÓTANO BASEMENT	SÓTANO BASEMENT	313.900,00 €

PODIO 3	PLANTA FLOOR	DORMITORIOS BEDROOMS	BAÑOS BATHS	SIP CONST. BUILT AREA	TERRAZA TERRACE	JARDIN GARDEN	SOLARIUM SOLARIUM	APARCAMIENTO CAR PARK	TRASTERO WAREHOUSE	PRECIO PRICE
17	B3-V1-A PLANTA BAJA GROUND FLOOR	2	2	87,61	15,25	19,00	-	SÓTANO BASEMENT	SÓTANO BASEMENT	239.900,00 €
18	B3-V2-B PLANTA BAJA GROUND FLOOR	2	2	87,61	15,25	19,00	-	SÓTANO BASEMENT	SÓTANO BASEMENT	VENDIDA
19	B3-V3-A PLANTA PRIMERA FIRST FLOOR	2	2	88,29	15,25	-	-	SÓTANO BASEMENT	SÓTANO BASEMENT	229.900,00 €
20	B3-V4-B PLANTA PRIMERA FIRST FLOOR	2	2	88,29	15,25	-	-	SÓTANO BASEMENT	SÓTANO BASEMENT	229.900,00 €
21	B3-V5-A PLANTA PRIMERA FIRST FLOOR	2	2	88,29	15,25	-	35,00	SÓTANO BASEMENT	SÓTANO BASEMENT	246.900,00 €
22	B3-V6-B PLANTA ATICO PENTHOUSE	2	2	88,29	13,25	-	35,00	SÓTANO BASEMENT	SÓTANO BASEMENT	246.900,00 €

PODIO 4	PLANTA FLOOR	DORMITORIOS BEDROOMS	BAÑOS BATHS	SIP CONST. BUILT AREA	TERRAZA TERRACE	JARDIN GARDEN	SOLARIUM SOLARIUM	APARCAMIENTO CAR PARK	TRASTERO WAREHOUSE	PRECIO PRICE
23	B4-V1-A PLANTA BAJA GROUND FLOOR	2	2	87,61	15,25	19,00	-	SÓTANO BASEMENT	SÓTANO BASEMENT	238.400,00 €
24	B4-V2-B PLANTA BAJA GROUND FLOOR	2	2	87,61	15,25	19,00	-	SÓTANO BASEMENT	SÓTANO BASEMENT	238.400,00 €
25	B4-V3-A PLANTA PRIMERA FIRST FLOOR	2	2	88,29	15,25	-	-	SÓTANO BASEMENT	SÓTANO BASEMENT	227.400,00 €
26	B4-V4-B PLANTA PRIMERA FIRST FLOOR	2	2	88,29	15,25	-	-	SÓTANO BASEMENT	SÓTANO BASEMENT	227.400,00 €
27	B4-V5-A PLANTA ATICO PENTHOUSE	2	2	88,29	15,25	-	35,00	SÓTANO BASEMENT	SÓTANO BASEMENT	243.400,00 €
28	B4-V6-B PLANTA ATICO PENTHOUSE	2	2	88,29	13,25	-	35,00	SÓTANO BASEMENT	SÓTANO BASEMENT	243.400,00 €

PODIO 5	PLANTA FLOOR	DORMITORIOS BEDROOMS	BAÑOS BATHS	SIP CONST. BUILT AREA	TERRAZA TERRACE	JARDIN GARDEN	SOLARIUM SOLARIUM	APARCAMIENTO CAR PARK	TRASTERO WAREHOUSE	PRECIO PRICE
29	B5-V1-A PLANTA BAJA GROUND FLOOR	2	2	87,61	15,25	19,00	-	SÓTANO BASEMENT	SÓTANO BASEMENT	235.900,00 €
30	B5-V2-B PLANTA BAJA GROUND FLOOR	2	2	87,61	15,25	19,00	-	SÓTANO BASEMENT	SÓTANO BASEMENT	234.900,00 €
31	B5-V3-A PLANTA PRIMERA FIRST FLOOR	2	2	88,29	15,25	-	-	SÓTANO BASEMENT	SÓTANO BASEMENT	219.900,00 €
32	B5-V4-B PLANTA PRIMERA FIRST FLOOR	2	2	88,29	15,25	-	-	SÓTANO BASEMENT	SÓTANO BASEMENT	VENDIDO
33	B5-V5-A PLANTA ATICO PENTHOUSE	2	2	88,29	15,25	-	35,00	SÓTANO BASEMENT	SÓTANO BASEMENT	239.900,00 €
34	B5-V6-B PLANTA ATICO PENTHOUSE	2	2	88,29	13,25	-	35,00	SÓTANO BASEMENT	SÓTANO BASEMENT	239.900,00 €

PODIO 6	PLANTA FLOOR	DORMITORIOS BEDROOMS	BAÑOS BATHS	SIP CONST. BUILT AREA	TERRAZA TERRACE	JARDIN GARDEN	SOLARIUM SOLARIUM	APARCAMIENTO CAR PARK	TRASTERO WAREHOUSE	PRECIO PRICE
35	B6-V2-B PLANTA BAJA GROUND FLOOR	2	2	90,59	18,60	32,72	-	SÓTANO BASEMENT	SÓTANO BASEMENT	VENDIDA
36	B6-V3-A PLANTA PRIMERA FIRST FLOOR	2	2	87,41	18,60	-	-	SÓTANO BASEMENT	SÓTANO BASEMENT	VENDIDA
37	B6-V4-B PLANTA PRIMERA FIRST FLOOR	2	2	87,41	18,60	-	-	SÓTANO BASEMENT	SÓTANO BASEMENT	219.900,00€
38	B6-V5-A PLANTA ATICO PENTHOUSE	2	2	87,41	18,60	-	35,00	SÓTANO BASEMENT	SÓTANO BASEMENT	241.400,00 €
39	B6-V6-B PLANTA ATICO PENTHOUSE	2	2	87,41	18,60	-	35,00	SÓTANO BASEMENT	SÓTANO BASEMENT	VENDIDA

PODIO 7	PLANTA FLOOR	DORMITORIOS BEDROOMS	BAÑOS BATHS	SIP CONST. BUILT AREA	TERRAZA TERRACE	JARDIN GARDEN	SOLARIUM SOLARIUM	APARCAMIENTO CAR PARK	TRASTERO WAREHOUSE	PRECIO PRICE
40	B7-V1-A PLANTA BAJA GROUND FLOOR	2	2	84,56	15,25	19,00	-	SÓTANO BASEMENT	SÓTANO BASEMENT	229.900,00 €
41	B7-V2-B PLANTA BAJA GROUND FLOOR	2	2	84,56	15,25	19,00	-	SÓTANO BASEMENT	SÓTANO BASEMENT	229.900,00 €
42	B7-V3-A PLANTA PRIMERA FIRST FLOOR	2	2	84,56	15,25	-	-	SÓTANO BASEMENT	SÓTANO BASEMENT	VENDIDO
43	B7-V4-B PLANTA PRIMERA FIRST FLOOR	2	2	84,56	15,25	-	-	SÓTANO BASEMENT	SÓTANO BASEMENT	209.900,00 €
44	B7-V5-A PLANTA ATICO PENTHOUSE	2	2	84,56	15,25	-	35,00	SÓTANO BASEMENT	SÓTANO BASEMENT	237.900,00 €
45	B7-V6-B PLANTA ATICO PENTHOUSE	2	2	84,56	15,25	-	35,00	SÓTANO BASEMENT	SÓTANO BASEMENT	237.900,00 €

Kasia Wabia

Aria Home Invest S.L.U

 +48 601 56 88 44

 +34 674 427 308

 hello@ariarealestate.eu

 www.ariarealestate.eu

