



Alicante

Apartment next to golf course

Offer ID: 18233

From 365000 €



Completion date:
November 2024 - January 2025

*Price does not include VAT



Property Information

Type: Apartment

Number of bathrooms: 2

Number of bedrooms: 2

Area: 117.62 m²

City: Alicante



Property Description

Located on the renowned FONT DEL LLOP golf course, you will find this beautiful residential area of duplex flats with spectacular views of the golf course and mountains. These modern flats are built in excellent style and have 2 communal pools with gardens. Each flat has an

underground parking space with a private storage room. These sunny flats have a well-designed layout, with 2 bedrooms and 2 bathrooms, an open-plan kitchen, a bright living room that opens onto a large terrace with panoramic views of the golf course. They are equipped with an aerothermal system (underfloor heating, air conditioning and water heater) and white goods.

The Font del Llop golf course is located in the heart of the Alicante province. It is located 15 minutes from Alicante-Elche International Airport. The nearest train station is in Alicante, 20 minutes from the golf course. Font del Llop Golf Resort is 20 minutes from the magnificent beaches of the Mediterranean Sea.



Advantages



Near golf courses



Air conditioning



Shared pool



Balcony/Terrace



Parking



Garden



Garage



Gated community



What is included in the price



Furnished kitchen



Parking space



Storage room



Shared pool



Air conditioning



Garden

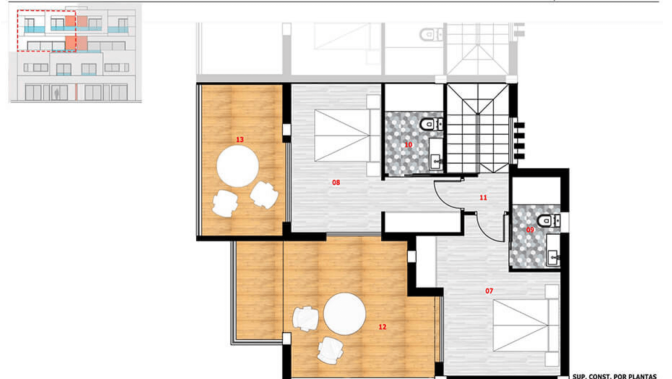


Furnished bathroom



Gallery





| BLOQUE I | | | | BLOQUE II | | | | BLOQUE III | | | | BLOQUE IV | | | |
|-------------|-----|--------------|-----|--------------|-----|--------------|-----|--------------|-----|--------------|-----|--------------|-----|------------------|-----|
| 30 | N°3 | 30 | N°4 | 30 | N°3 | 30 | N°4 | 30 | N°3 | 30 | N°4 | 30 | N°3 | 30 | N°4 |
| 3ª PLANTA | | SOLD | | 3ª PLANTA | | SOLD | | 3ª PLANTA | | SOLD | | 3ª PLANTA | | SOLD | |
| 2ª PLANTA | | SOLD | | 2ª PLANTA | | SOLD | | 2ª PLANTA | | SOLD | | 2ª PLANTA | | RESERVADO PILOTO | |
| 30 | N°1 | 30 | N°2 | 30 | N°3 | 30 | N°4 | 30 | N°3 | 30 | N°4 | 30 | N°3 | 30 | N°4 |
| 1ª PLANTA | | DUPLEX | | 1ª PLANTA | | SOLD | | 1ª PLANTA | | SOLD | | 1ª PLANTA | | SOLD | |
| PLANTA BAJA | | SOLD | | PLANTA BAJA | | 429.000,00 € | | PLANTA BAJA | | SOLD | | PLANTA BAJA | | SOLD | |
| 445 | | 365.000,00 € | | 365.000,00 € | | 365.000,00 € | | 365.000,00 € | | 365.000,00 € | | 365.000,00 € | | 365.000,00 € | |
| PHASE 2 | | | | | | | | PHASE 1 | | | | | | | |

S&P. CONST. POR PLANTAS

Kasia Wabia

Aria Home Invest S.L.U

 +48 601 56 88 44

 +34 674 427 308

 hello@ariarealestate.eu

 www.ariarealestate.eu

