



Estepona  
**Estepona Apartment**

Offer ID: 3327

**From 283000 €**

\*Price does not include VAT



Completion date:



### Property Information

**Type:** Apartment

**Number of bathrooms:** 2

**Number of bedrooms:** 3

**Area:** 68.16 m<sup>2</sup>

**City:** Estepona



### Property Description

New residential project in Estepona. This new construction project offers a total of 35 2 and 3 bedroom homes, with spacious terraces, parking and storage. The residential complex is surrounded by extensive public areas. Flats with spacious terraces in Estepona All newly built flats have terraces, parking and storage included in the price. The complex stands out with furnished kitchens equipped with modern furniture and appliances: induction hob, extractor hood, microwave, washing machine, dishwasher and fridge.

The complex is located 10 minutes from the old town and La Rada beach. It is a modern, sustainable residential environment that is well connected, with all the necessary services and plenty of green space. The development is located in Parque Central, just a few minutes from the centre of Estepona. A dynamic city with all services, schools, institutes, health facilities and sports facilities. Perfectly connected thanks to quick access to the AP-7 and A-7 roads, which brings the development closer to key surrounding towns such as Marbella, Algeciras, Gibraltar, Fuengirola, Malaga, as well as the international airports of Gibraltar and Malaga.



## Advantages



Air conditioning



Balcony/Terrace



Close to the sea



Parking



Elevator



Garage



## What is included in the price



Furnished kitchen



Storage room



Smarthome



Parking space



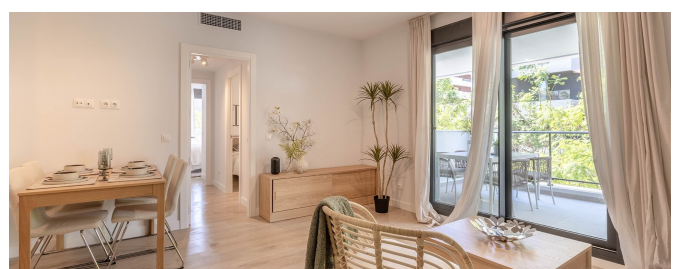
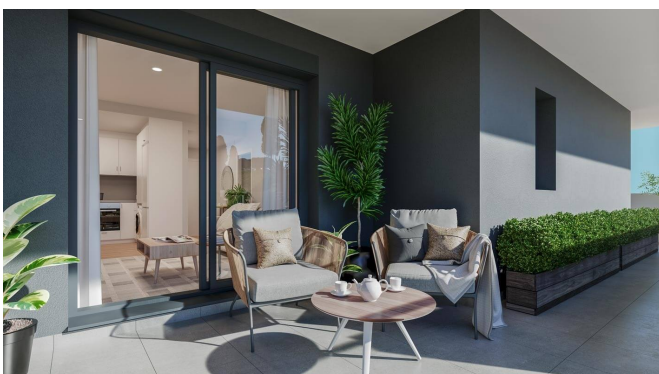
Air conditioning

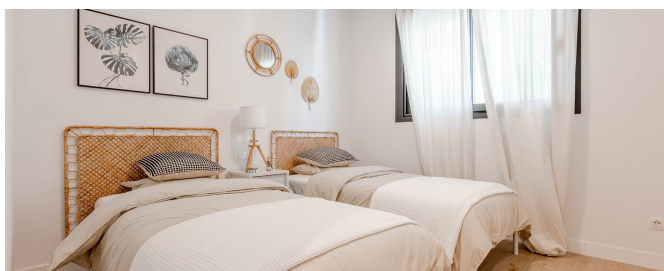
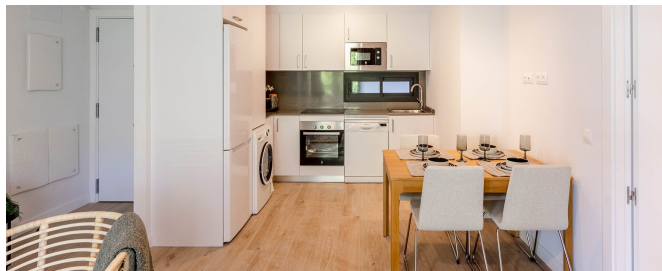


Furnished bathroom



## Gallery





ESTEPONA, MÁLAGA

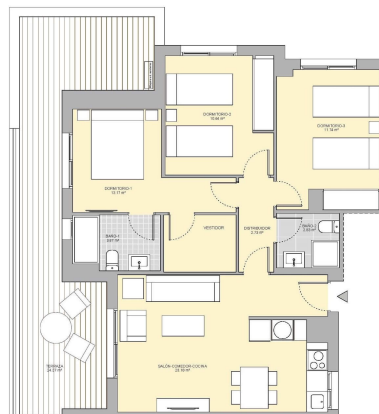
#### PLANTA 5 / PUERTA C

	SUP. ÚTIL M <sup>2</sup> (NET)	
Sala/cocina-comedor	23.18 m <sup>2</sup>	14
Dormitorio 1	13.17 m <sup>2</sup>	14
Dormitorio 2	10.64 m <sup>2</sup>	14
Dormitorio 3	11.74 m <sup>2</sup>	14
Baño 1	2.87 m <sup>2</sup>	14
Baño 2	2.80 m <sup>2</sup>	14
Distribuidor	3.73 m <sup>2</sup>	14
Taxas	34.37 m <sup>2</sup>	14



Superficie (G) Interior	65.13 m <sup>2</sup>
Superficie (G) Exterior	24.37 m <sup>2</sup>
Superficie construida de todo el edificio	105.63 m <sup>2</sup>

DECRETO 2162/85	74.98 m <sup>2</sup>
Superficie construida de todo el edificio	105.63 m <sup>2</sup>



El presente plano no es definitivo, ya que ha sido elaborado conforme al Proyecto Ejecutivo del Edificio y, por tanto, ARIA Home no se reserva la facultad de incluir las modificaciones necesarias por exigencias técnicas y/o prácticas o derivadas por cualquier administración o organismo público, acreditado en todo caso a la Dirección General del Catastro. Los datos de superficie construida, el contenido, volumen (G) de todo el edificio, son meramente ilustrativos. Los datos de plantas y la distribución de espacios interiores no son vinculantes. Las superficies expresadas son aproximadas, pudiendo experimentar modificaciones por razones de índole técnica y/o legal, en el momento de la ejecución de las obras.

**Kasia Wabia**

**Aria Home Invest S.L.U**

+48 601 56 88 44

+34 674 427 308

hello@ariaspain.com

www.ariaspain.com

**ARIA**  
— SPAIN —



Miembro de  
**api**

**RAICV**  
4123