



Denia  
**Penthouse in Denia**

Offer ID: 13555

**From 475000 €**

\*Price does not include VAT



Completion date:



**Property Information**

**Type:** Penthouse

**Number of bathrooms:** 2

**Number of bedrooms:** 3

**Area:** 81.58 m<sup>2</sup>

**City:** Denia



## Property Description

The first phase of the development will include 51 flats with 1, 2 and 3 bedrooms. The development, in a great location, is 1 km from the beach.

The buildings have been designed as compact structures, responding to the architects' and designers' ongoing desire for efficiency in development. Positioned at various key points in the residential area, these decisions ensure that the flats are just the right temperature in both winter and summer.

But undoubtedly the main feature of the flats will be their large terraces. Thanks to their regular proportions, they are ideal spaces for outdoor living. The integration of the living room with these spacious terraces will unify your home as a living space where the inside meets the outside.

Flats with furnished kitchen and bathroom, with built-in air conditioning.



## Advantages



Sea view



Air conditioning



Shared pool



Balcony/Terrace



Close to the sea



Parking



Solarium



Gated community



## What is included in the price



Furnished kitchen



Parking space



Shared pool



Air conditioning



Solarium



Furnished bathroom

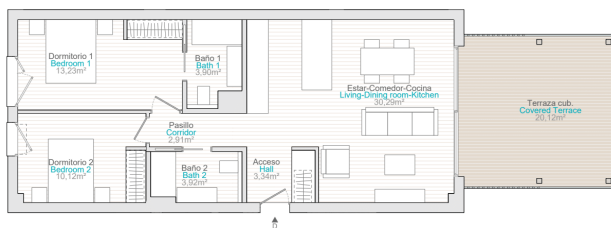
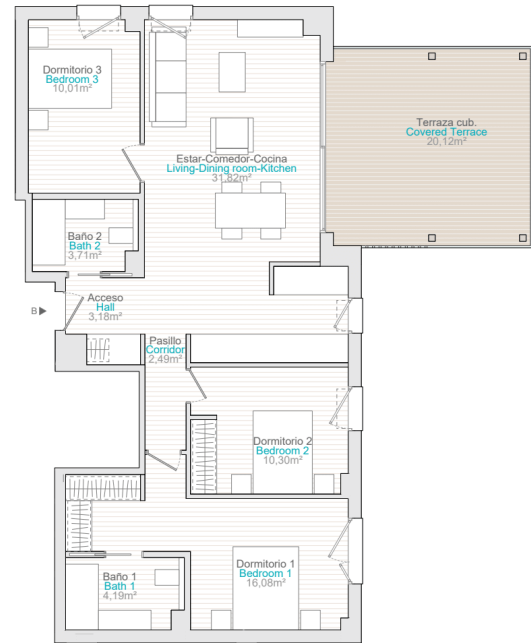


## Gallery









| Block | Staircase | Floor | Door  | Apartment | Room/Room | Bedrooms | Bathrooms | Net Usable Area (sqm) | Overall Building Area (sqm) | Open Space (sqm) | Suitcases | Garden | Total Terrace (sqm) | Built-up | Overall Price (EUR net) | VAT  | Total Price (EUR net) |
|-------|-----------|-------|-------|-----------|-----------|----------|-----------|-----------------------|-----------------------------|------------------|-----------|--------|---------------------|----------|-------------------------|------|-----------------------|
| 1     | 1         | 0     | ADA-1 | ADA-1     | 2         | 2-1      | 2         | 76,91                 | 15,1                        | 17,6             | 0         | 0      | 0                   | 0        | REMOVED                 | 0,00 | 544,43                |
| 1     | 1         | 0     | ADA-2 | ADA-2     | 2         | 2-1      | 2         | 76,91                 | 15,1                        | 0                | 0         | 0      | 0                   | 0        | REMOVED                 | 0,00 | 544,43                |
| 1     | 1         | 1     | 0     | BA-1      | BA-1      | 3        | 2         | 82,76                 | 20,2                        | 0                | 0         | 0      | 0                   | 0        | REMOVED                 | 0,00 | 588,40                |
| 1     | 1         | 1     | 1     | BA-2      | BA-2      | 3        | 2         | 82,76                 | 20,2                        | 0                | 0         | 0      | 0                   | 0        | REMOVED                 | 0,00 | 588,40                |
| 1     | 1         | 1     | 2     | BA-3      | BA-3      | 3        | 2         | 82,76                 | 20,2                        | 0                | 0         | 0      | 0                   | 0        | REMOVED                 | 0,00 | 588,40                |
| 1     | 1         | 1     | 3     | BA-4      | BA-4      | 3        | 2         | 82,76                 | 20,2                        | 0                | 0         | 0      | 0                   | 0        | REMOVED                 | 0,00 | 588,40                |
| 1     | 1         | 1     | 4     | BA-5      | BA-5      | 3        | 2         | 82,76                 | 20,2                        | 0                | 0         | 0      | 0                   | 0        | REMOVED                 | 0,00 | 588,40                |
| 1     | 1         | 1     | 5     | BA-6      | BA-6      | 3        | 2         | 82,76                 | 20,2                        | 0                | 0         | 0      | 0                   | 0        | REMOVED                 | 0,00 | 588,40                |
| 1     | 1         | 1     | 6     | BA-7      | BA-7      | 3        | 2         | 82,76                 | 20,2                        | 0                | 0         | 0      | 0                   | 0        | REMOVED                 | 0,00 | 588,40                |
| 1     | 1         | 1     | 7     | BA-8      | BA-8      | 3        | 2         | 82,76                 | 20,2                        | 0                | 0         | 0      | 0                   | 0        | REMOVED                 | 0,00 | 588,40                |
| 1     | 1         | 1     | 8     | BA-9      | BA-9      | 3        | 2         | 82,76                 | 20,2                        | 0                | 0         | 0      | 0                   | 0        | REMOVED                 | 0,00 | 588,40                |
| 1     | 1         | 1     | 9     | BA-10     | BA-10     | 3        | 2         | 82,76                 | 20,2                        | 0                | 0         | 0      | 0                   | 0        | REMOVED                 | 0,00 | 588,40                |
| 1     | 1         | 1     | 10    | BA-11     | BA-11     | 3        | 2         | 82,76                 | 20,2                        | 0                | 0         | 0      | 0                   | 0        | REMOVED                 | 0,00 | 588,40                |
| 1     | 1         | 1     | 11    | BA-12     | BA-12     | 3        | 2         | 82,76                 | 20,2                        | 0                | 0         | 0      | 0                   | 0        | REMOVED                 | 0,00 | 588,40                |
| 1     | 1         | 1     | 12    | BA-13     | BA-13     | 3        | 2         | 82,76                 | 20,2                        | 0                | 0         | 0      | 0                   | 0        | REMOVED                 | 0,00 | 588,40                |
| 1     | 1         | 1     | 13    | BA-14     | BA-14     | 3        | 2         | 82,76                 | 20,2                        | 0                | 0         | 0      | 0                   | 0        | REMOVED                 | 0,00 | 588,40                |
| 1     | 1         | 1     | 14    | BA-15     | BA-15     | 3        | 2         | 82,76                 | 20,2                        | 0                | 0         | 0      | 0                   | 0        | REMOVED                 | 0,00 | 588,40                |
| 1     | 1         | 1     | 15    | BA-16     | BA-16     | 3        | 2         | 82,76                 | 20,2                        | 0                | 0         | 0      | 0                   | 0        | REMOVED                 | 0,00 | 588,40                |
| 1     | 1         | 1     | 16    | BA-17     | BA-17     | 3        | 2         | 82,76                 | 20,2                        | 0                | 0         | 0      | 0                   | 0        | REMOVED                 | 0,00 | 588,40                |
| 1     | 1         | 1     | 17    | BA-18     | BA-18     | 3        | 2         | 82,76                 | 20,2                        | 0                | 0         | 0      | 0                   | 0        | REMOVED                 | 0,00 | 588,40                |
| 1     | 1         | 1     | 18    | BA-19     | BA-19     | 3        | 2         | 82,76                 | 20,2                        | 0                | 0         | 0      | 0                   | 0        | REMOVED                 | 0,00 | 588,40                |
| 1     | 1         | 1     | 19    | BA-20     | BA-20     | 3        | 2         | 82,76                 | 20,2                        | 0                | 0         | 0      | 0                   | 0        | REMOVED                 | 0,00 | 588,40                |
| 1     | 1         | 1     | 20    | BA-21     | BA-21     | 3        | 2         | 82,76                 | 20,2                        | 0                | 0         | 0      | 0                   | 0        | REMOVED                 | 0,00 | 588,40                |
| 1     | 1         | 1     | 21    | BA-22     | BA-22     | 3        | 2         | 82,76                 | 20,2                        | 0                | 0         | 0      | 0                   | 0        | REMOVED                 | 0,00 | 588,40                |
| 1     | 1         | 1     | 22    | BA-23     | BA-23     | 3        | 2         | 82,76                 | 20,2                        | 0                | 0         | 0      | 0                   | 0        | REMOVED                 | 0,00 | 588,40                |
| 1     | 1         | 1     | 23    | BA-24     | BA-24     | 3        | 2         | 82,76                 | 20,2                        | 0                | 0         | 0      | 0                   | 0        | REMOVED                 | 0,00 | 588,40                |
| 1     | 1         | 1     | 24    | BA-25     | BA-25     | 3        | 2         | 82,76                 | 20,2                        | 0                | 0         | 0      | 0                   | 0        | REMOVED                 | 0,00 | 588,40                |
| 1     | 1         | 1     | 25    | BA-26     | BA-26     | 3        | 2         | 82,76                 | 20,2                        | 0                | 0         | 0      | 0                   | 0        | REMOVED                 | 0,00 | 588,40                |
| 1     | 1         | 1     | 26    | BA-27     | BA-27     | 3        | 2         | 82,76                 | 20,2                        | 0                | 0         | 0      | 0                   | 0        | REMOVED                 | 0,00 | 588,40                |
| 1     | 1         | 1     | 27    | BA-28     | BA-28     | 3        | 2         | 82,76                 | 20,2                        | 0                | 0         | 0      | 0                   | 0        | REMOVED                 | 0,00 | 588,40                |
| 1     | 1         | 1     | 28    | BA-29     | BA-29     | 3        | 2         | 82,76                 | 20,2                        | 0                | 0         | 0      | 0                   | 0        | REMOVED                 | 0,00 | 588,40                |
| 1     | 1         | 1     | 29    | BA-30     | BA-30     | 3        | 2         | 82,76                 | 20,2                        | 0                | 0         | 0      | 0                   | 0        | REMOVED                 | 0,00 | 588,40                |
| 1     | 1         | 1     | 30    | BA-31     | BA-31     | 3        | 2         | 82,76                 | 20,2                        | 0                | 0         | 0      | 0                   | 0        | REMOVED                 | 0,00 | 588,40                |
| 1     | 1         | 1     | 31    | BA-32     | BA-32     | 3        | 2         | 82,76                 | 20,2                        | 0                | 0         | 0      | 0                   | 0        | REMOVED                 | 0,00 | 588,40                |
| 1     | 1         | 1     | 32    | BA-33     | BA-33     | 3        | 2         | 82,76                 | 20,2                        | 0                | 0         | 0      | 0                   | 0        | REMOVED                 | 0,00 | 588,40                |
| 1     | 1         | 1     | 33    | BA-34     | BA-34     | 3        | 2         | 82,76                 | 20,2                        | 0                | 0         | 0      | 0                   | 0        | REMOVED                 | 0,00 | 588,40                |
| 1     | 1         | 1     | 34    | BA-35     | BA-35     | 3        | 2         | 82,76                 | 20,2                        | 0                | 0         | 0      | 0                   | 0        | REMOVED                 | 0,00 | 588,40                |
| 1     | 1         | 1     | 35    | BA-36     | BA-36     | 3        | 2         | 82,76                 | 20,2                        | 0                | 0         | 0      | 0                   | 0        | REMOVED                 | 0,00 | 588,40                |
| 1     | 1         | 1     | 36    | BA-37     | BA-37     | 3        | 2         | 82,76                 | 20,2                        | 0                | 0         | 0      | 0                   | 0        | REMOVED                 | 0,00 | 588,40                |
| 1     | 1         | 1     | 37    | BA-38     | BA-38     | 3        | 2         | 82,76                 | 20,2                        | 0                | 0         | 0      | 0                   | 0        | REMOVED                 | 0,00 | 588,40                |
| 1     | 1         | 1     | 38    | BA-39     | BA-39     | 3        | 2         | 82,76                 | 20,2                        | 0                | 0         | 0      | 0                   | 0        | REMOVED                 | 0,00 | 588,40                |
| 1     | 1         | 1     | 39    | BA-40     | BA-40     | 3        | 2         | 82,76                 | 20,2                        | 0                | 0         | 0      | 0                   | 0        | REMOVED                 | 0,00 | 588,40                |
| 1     | 1         | 1     | 40    | BA-41     | BA-41     | 3        | 2         | 82,76                 | 20,2                        | 0                | 0         | 0      | 0                   | 0        | REMOVED                 | 0,00 | 588,40                |
| 1     | 1         | 1     | 41    | BA-42     | BA-42     | 3        | 2         | 82,76                 | 20,2                        | 0                | 0         | 0      | 0                   | 0        | REMOVED                 | 0,00 | 588,40                |
| 1     | 1         | 1     | 42    | BA-43     | BA-43     | 3        | 2         | 82,76                 | 20,2                        | 0                | 0         | 0      | 0                   | 0        | REMOVED                 | 0,00 | 588,40                |
| 1     | 1         | 1     | 43    | BA-44     | BA-44     | 3        | 2         | 82,76                 | 20,2                        | 0                | 0         | 0      | 0                   | 0        | REMOVED                 | 0,00 | 588,40                |
| 1     | 1         | 1     | 44    | BA-45     | BA-45     | 3        | 2         | 82,76                 | 20,2                        | 0                | 0         | 0      | 0                   | 0        | REMOVED                 | 0,00 | 588,40                |
| 1     | 1         | 1     | 45    | BA-46     | BA-46     | 3        | 2         | 82,76                 | 20,2                        | 0                | 0         | 0      | 0                   | 0        | REMOVED                 | 0,00 | 588,40                |
| 1     | 1         | 1     | 46    | BA-47     | BA-47     | 3        | 2         | 82,76                 | 20,2                        | 0                | 0         | 0      | 0                   | 0        | REMOVED                 | 0,00 | 588,40                |
| 1     | 1         | 1     | 47    | BA-48     | BA-48     | 3        | 2         | 82,76                 | 20,2                        | 0                | 0         | 0      | 0                   | 0        | REMOVED                 | 0,00 | 588,40                |
| 1     | 1         | 1     | 48    | BA-49     | BA-49     | 3        | 2         | 82,76                 | 20,2                        | 0                | 0         | 0      | 0                   | 0        | REMOVED                 | 0,00 | 588,40                |
| 1     | 1         | 1     | 49    | BA-50     | BA-50     | 3        | 2         | 82,76                 | 20,2                        | 0                | 0         | 0      | 0                   | 0        | REMOVED                 | 0,00 | 588,40                |
| 1     | 1         | 1     | 50    | BA-51     | BA-51     | 3        | 2         | 82,76                 | 20,2                        | 0                | 0         | 0      | 0                   | 0        | REMOVED                 | 0,00 | 588,40                |
| 1     | 1         | 1     | 51    | BA-52     | BA-52     | 3        | 2         | 82,76                 | 20,2                        | 0                | 0         | 0      | 0                   | 0        | REMOVED                 | 0,00 | 588,40                |
| 1     | 1         | 1     | 52    | BA-53     | BA-53     | 3        | 2         | 82,76                 | 20,2                        | 0                | 0         | 0      | 0                   | 0        | REMOVED                 | 0,00 | 588,40                |
| 1     | 1         | 1     | 53    | BA-54     | BA-54     | 3        | 2         | 82,76                 | 20,2                        | 0                | 0         | 0      | 0                   | 0        | REMOVED                 | 0,00 | 588,40                |
| 1     | 1         | 1     | 54    | BA-55     | BA-55     | 3        | 2         | 82,76                 | 20,2                        | 0                | 0         | 0      | 0                   | 0        | REMOVED                 | 0,00 | 588,40                |
| 1     | 1         | 1     | 55    | BA-56     | BA-56     | 3        | 2         | 82,76                 | 20,2                        | 0                | 0         | 0      | 0                   | 0        | REMOVED                 | 0,00 | 588,40                |
| 1     | 1         | 1     | 56    | BA-57     | BA-57     | 3        | 2         | 82,76                 | 20,2                        | 0                | 0         | 0      | 0                   | 0        | REMOVED                 | 0,00 | 588,40                |
| 1     | 1         | 1     | 57    | BA-58     | BA-58     | 3        | 2         | 82,76                 | 20,2                        | 0                | 0         | 0      | 0                   | 0        | REMOVED                 | 0,00 | 588,40                |
| 1     | 1         | 1     | 58    | BA-59     | BA-59     | 3        | 2         | 82,76                 | 20,2                        | 0                | 0         | 0      | 0                   | 0        | REMOVED                 | 0,00 | 588,40                |
| 1     | 1         | 1     | 59    | BA-60     | BA-60     | 3        | 2         | 82,76                 | 20,2                        | 0                | 0         | 0      | 0                   | 0        | REMOVED                 | 0,00 | 588,40                |
| 1     | 1         | 1     | 60    | BA-61     | BA-61     | 3        | 2         | 82,76                 | 20,2                        | 0                | 0         | 0      | 0                   | 0        | REMOVED                 | 0,00 | 588,40                |
| 1     | 1         | 1     | 61    | BA-62     | BA-62     | 3        | 2         | 82,76                 | 20,2                        | 0                | 0         | 0      | 0                   | 0        | REMOVED                 | 0,00 | 588,40                |
| 1     | 1         | 1     | 62    | BA-63     | BA-63     | 3        | 2         | 82,76                 | 20,2                        | 0                | 0         | 0      | 0                   | 0        | REMOVED                 | 0,00 | 588,40                |
| 1     | 1         | 1     | 63    | BA-64     | BA-64     | 3        | 2         | 82,76                 | 20,2                        | 0                | 0         | 0      | 0                   | 0        | REMOVED                 | 0,00 | 588,40                |
| 1     | 1         | 1     | 64    | BA-65     | BA-65     | 3        | 2         | 82,76                 | 20,2                        | 0                | 0         | 0      | 0                   | 0        | REMOVED                 | 0,00 | 588,40                |
| 1     | 1         | 1     | 65    | BA-66     | BA-66     | 3        | 2         | 82,76                 | 20,2                        | 0                | 0         | 0      | 0                   | 0        | REMOVED                 | 0,00 | 588,40                |
| 1     | 1         | 1     | 66    | BA-67     | BA-67     | 3        | 2         | 82,76                 | 20,2                        | 0                | 0         | 0      | 0                   | 0        | REMOVED                 | 0,00 | 588,40                |
| 1     | 1         | 1     | 67    | BA-68     | BA-68     | 3        | 2         | 82,76                 | 20,2                        | 0                | 0         | 0      | 0                   | 0        | REMOVED                 | 0,00 | 588,40                |
| 1     | 1         | 1     | 68    | BA-69     | BA-69     | 3        | 2         | 82,76                 | 20,2                        | 0                | 0         | 0      | 0                   | 0        | REMOVED                 | 0,00 | 588,40                |
| 1     | 1         | 1     | 69    | BA-70     | BA-70     | 3        | 2         | 82,76                 | 20,2                        | 0                | 0         | 0      | 0                   | 0        | REMOVED                 | 0,00 | 588,40                |
| 1     | 1         | 1     | 70    | BA-71     | BA-71     | 3        | 2         | 82,76                 | 20,2                        | 0                | 0         | 0      | 0                   | 0        | REMOVED                 | 0,00 | 588,40                |
| 1     | 1         | 1     | 71    | BA-72     | BA-72     | 3        | 2         | 82,76                 | 20,2                        | 0                | 0         | 0      | 0                   | 0        | REMOVED                 | 0,00 | 588,40                |
| 1     | 1         | 1     | 72    | BA-73     | BA-73     | 3        | 2         | 82,76                 | 20,2                        | 0                | 0         | 0      | 0                   | 0        | REMOVED                 | 0,00 | 588,40                |
| 1     | 1         | 1     | 73    | BA-74     | BA-74     | 3        | 2         | 82,76                 | 20,2                        | 0                | 0         | 0      | 0                   | 0        | REMOVED                 | 0,00 | 588,40                |
| 1     | 1         | 1     | 74    | BA-75     | BA-75     | 3        | 2         | 82,76                 | 20,2                        | 0                | 0         | 0      | 0                   | 0        | REMOVED                 | 0,00 | 588,40                |
| 1     | 1         | 1     | 75    | BA-76     | BA-76     | 3        | 2         | 82,76                 | 20,2                        | 0                | 0         | 0      | 0                   | 0        | REMOVED                 | 0,00 | 588,40                |
| 1     | 1         | 1     | 76    | BA-77     | BA-77     | 3        | 2         | 82,76                 | 20,2                        | 0                | 0         | 0      | 0                   | 0        | REMOVED                 | 0,00 | 588,40                |
| 1     | 1         | 1     | 77    | BA-78     | BA-78     | 3        | 2         | 82,76                 | 20,2                        | 0                | 0         | 0      | 0                   | 0        | REMOVED                 | 0,00 | 588,40                |
| 1     | 1         | 1     | 78    | BA-79     | BA-79     | 3        | 2         | 82,76                 | 20,2                        | 0                | 0         | 0      | 0                   | 0        | REMOVED                 | 0,00 | 588,40                |
| 1     | 1         | 1     | 79    | BA-80     | BA-80     | 3        | 2         | 82,76                 | 20,2                        | 0                | 0         | 0      | 0                   | 0        | REMOVED                 | 0,00 | 588,40                |
| 1     | 1         | 1     | 80    | BA-81     | BA-81     | 3        | 2         | 82,76                 | 20,2                        | 0                | 0         | 0      | 0                   | 0        | REMOVED                 | 0,00 | 588,40                |
| 1     | 1         | 1     | 81    | BA-82     | BA-82     | 3        | 2         | 82,76                 | 20,2                        | 0                | 0         | 0      | 0                   | 0        | REMOVED                 | 0,00 | 588,40                |
| 1     | 1         | 1     | 82    | BA-83     | BA-83     | 3        | 2         | 82,76                 | 20,2                        | 0                | 0         | 0      | 0                   | 0        | REMOVED                 | 0,00 | 588,40                |
| 1     | 1         | 1     | 83    | BA-84     | BA-84     | 3        | 2         | 82,76                 | 20,2                        | 0                | 0         | 0      | 0                   | 0        | REMOVED                 | 0,00 | 588,40                |
| 1     | 1         | 1     | 84    | BA-85     | BA-85     | 3        | 2         | 82,76                 | 20,2                        | 0                | 0         | 0      | 0                   | 0        | REMOVED                 | 0,00 | 588,40                |
| 1     | 1         | 1     | 85    | BA-86     | BA-86     | 3        | 2         | 82,76                 | 20,2                        | 0                | 0         | 0      | 0                   | 0        | REMOVED                 | 0,00 | 588,40                |
| 1     | 1         | 1     | 86    | BA-87     | BA-87     | 3        | 2         | 82,76                 | 20,2                        | 0                | 0         | 0      | 0                   | 0        | REMOVED                 | 0,00 | 588,40                |
| 1     | 1         | 1     | 87    | BA-88     | BA-88     | 3        | 2         | 82,76                 | 20,2                        | 0                | 0         | 0      | 0                   | 0        | REMOVED                 | 0,00 | 588,40                |
| 1     | 1         | 1     | 88    | BA-89     | BA-89     | 3        | 2         | 82,76                 | 20,2                        | 0                | 0         | 0      | 0                   | 0        | REMOVED                 |      |                       |

**Kasia Wabia**

**Aria Home Invest S.L.U**

☎ +48 601 56 88 44

☎ +34 674 427 308

✉ hello@ariaspain.com

🌐 www.ariaspain.com

**ARIA**  
— SPAIN —



Miembro de:  
**api**

 **RAICV**  
4123