



Estepona

Penthouse in Estepona

Offer ID: 8873

From 557000 €

*Price does not include VAT



Completion date:



Property Information

Type: Penthouse

Number of bathrooms: 2

Number of bedrooms: 3

Area: 170.24 m²

City: Estepona



Property Description

The Etherna Homes residential complex consists of a total of 135 1, 2 and 3-bedroom homes arranged in 6 low-rise buildings, with a careful contemporary, attractive design with simple and modern lines.

The privileged southern orientation has enabled us to design bright houses that make the most of hours of natural light. Its large windows provide spectacular views and connect the houses to the beauty of the landscape. Exceptional living rooms have been created that disappear into the horizon and enhance the sense of spaciousness and brightness.

The exclusive residential complex is complemented by pleasant common areas: a swimming pool with solarium, gym, playground, Zen areas and gardens with native species that reflect the beauty of living in a unique place like Estepona. The residential complex is integrated into a gated area to guarantee the safety and privacy of its neighbours, with a security checkpoint. Enjoy the advantages of being next to Valle Romano Golf & Resort.

Screen and mirror in the bathrooms at an extra cost.



Advantages



Sea view



Shared pool



Garage



Near golf courses



Balcony/Terrace



Solarium



Air conditioning



Elevator



Gated community



What is included in the price



Furnished kitchen



Storage room



Air conditioning



Smarthome



Parking space



Shared pool



Solarium



Furnished bathroom



Gallery

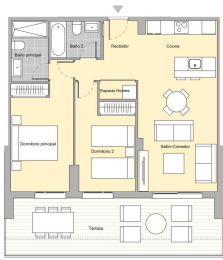
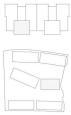




SUP-T05 VALLE ROMANO SECTOR 4, PARCELA R3
ESTEPONA, MÁLAGA

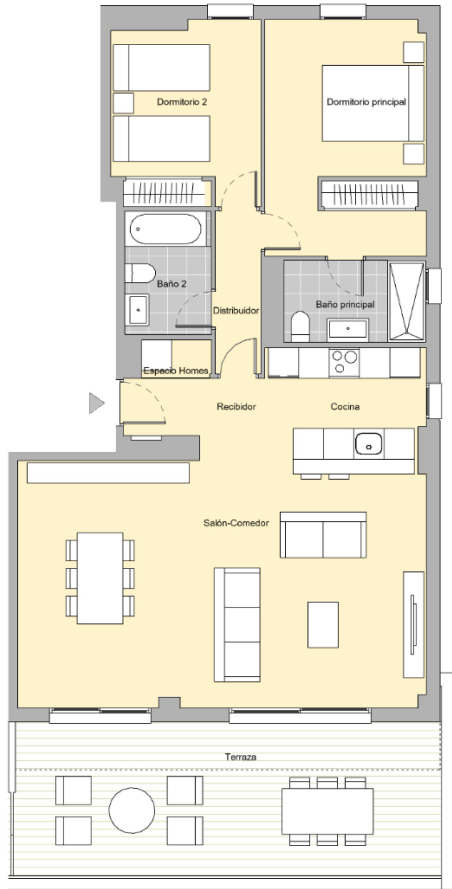
BQ9 - PT2 - P01 - PUERTA B

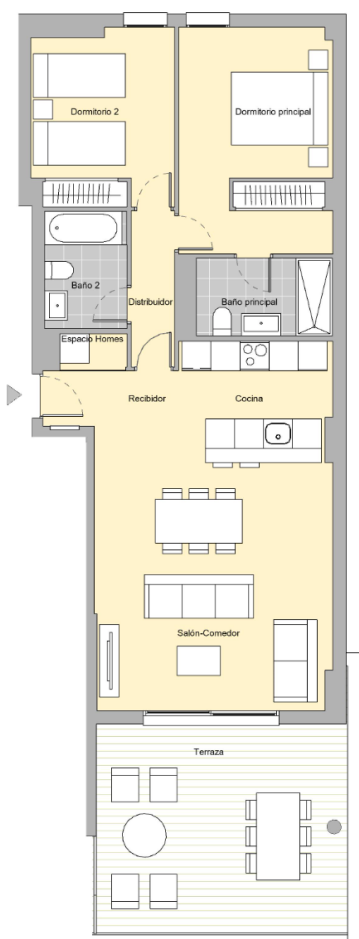
| | SUP. ÚTIL | EXTINT. |
|----------------------|----------------------|----------------|
| Receptor | 5,50 m ² | m ² |
| Salón-Comedor | 17,71 m ² | m ² |
| Cocina | 8,50 m ² | m ² |
| Dormitorio principal | 13,78 m ² | m ² |
| Dormitorio 2 | 11,88 m ² | m ² |
| Baño principal | 4,29 m ² | m ² |
| Baño 2 | 3,55 m ² | m ² |
| Espacio Homes | 1,22 m ² | m ² |
| Terraza | 23,51 m ² | m ² |



Superficie Útil Interior: 68,00 m²
Superficie Útil Exterior: 23,51 m²
Superficie Construida con p.p. 91: 91,51 m²
Superficie Útil a Decreto 218/2005 B.O.M.: 71,13 m²
Superficie construida a Decreto 218/2005 B.O.M.: 90,11 m²

ESCALA GRÁFICA
0 3 6 m





| FLOOR | BEDROOMS | BATHROOMS | SURFACE | TERRACE | PRICE * |
|----------------------|----------|-----------|------------|-----------|-----------|
| Property - Penthouse | 3 | 2 | 170.24 sqm | 92.21 sqm | € 557,000 |

| FLOOR | BEDROOMS | BATHROOMS | SURFACE | TERRACE | PRICE * |
|-------------------------|----------|-----------|------------|-----------|-----------|
| Property - Floor 1 | 2 | 2 | 105.24 sqm | 20.88 sqm | € 287,000 |
| Property - Floor 1 | 2 | 2 | 109.11 sqm | 22.26 sqm | € 299,000 |
| Property - Floor 1 | 2 | 2 | 105.24 sqm | 20.88 sqm | € 302,000 |
| Property - Floor 1 | 2 | 2 | 109.11 sqm | 22.26 sqm | € 314,000 |
| Property - Ground floor | 2 | 2 | 107.56 sqm | 18.66 sqm | € 318,000 |
| Property - Ground floor | 2 | 2 | 111.86 sqm | 55.95 sqm | € 327,000 |
| Property - Floor 2 | 2 | 2 | 105.24 sqm | 20.87 sqm | € 334,000 |
| Property - Penthouse | 2 | 2 | 126.51 sqm | 25.67 sqm | € 428,000 |

Kasia Wabia

Aria Home Invest S.L.U

+48 601 56 88 44

+34 674 427 308

hello@ariaspain.com

www.ariaspain.com

ARIA
— SPAIN —

Miembro de
api

RAICV
4123

