



Javea

Two-storey apartment in Javea

Offer ID: 16552

From 720000 €

*Price does not include VAT



Completion date:



Property Information

Type: Apartment

Number of bathrooms: 3

Number of bedrooms: 4

Area: 196.64 m²

City: Javea



Property Description

Come and see for yourself! 58 flats with 2 to 4 bedrooms with parking spaces and a storage room. In addition, the complex will have large gardens, a swimming pool and a social club. The flats offer views to enjoy the climate of Jávea all year round, providing a wonderful feeling of spaciousness and brightness.

In addition, the private terraces of the penthouses provide views of the unique and iconic architecture in the area.

Enjoying your new flat, you will have everything you need at your fingertips: restaurants, pharmacies, supermarkets, health centres and Molins De La Plana, the green lungs of Jávea. In addition, the Jávea bus station and the CV-734 road are close to the newly built development.



Advantages



Air conditioning



Close to the sea



Shared pool



Parking



Balcony/Terrace



Gated community



What is included in the price



Furnished kitchen



Storage room



Air conditioning



Parking space



Shared pool



Furnished bathroom

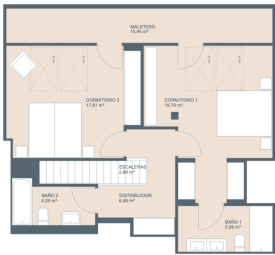


Gallery





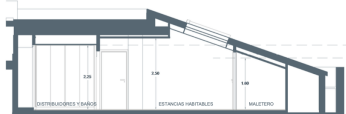
Planta terraza (nivel inferior)



Planta bajo cubierta (nivel superior)



OPCIÓN COCINA PREMIUM*opcional con coste



Fragmento de sección en planta 6/10





<input type="checkbox"/> Select all	PVP	Product Code	Type	Portal	Block	Piso	Door	# rooms	# toilets	Built M²
<input type="checkbox"/> VIVIENDA: BLOQUE 1, ESCALERA 1, PISO 3, PUERTA C	508.000 €	2336-VI-1-1-3-C	Vivienda	1	1	3	C	3	0	175,87
<input type="checkbox"/> GARAJE: BLOQUE 1, PISO -1, NUMERO 066	10.000 €	2336-GA-1--1-066	Garaje	-1	1	066		0	0	34,79
<input type="checkbox"/> TRASTERO: BLOQUE 1, PISO -1, NUMERO 21	2000 €	2336-TR-1--1-21	Trastero	-1	1	21		0	0	7,060
Subtotal	520.000 €									
<input type="checkbox"/> VIVIENDA: BLOQUE 1, ESCALERA 1, PISO 3, PUERTA D	513.000 €	2336-VI-1-1-3-D	Vivienda	1	1	3	D	3	0	177,03
<input type="checkbox"/> GARAJE: BLOQUE 1, PISO -1, NUMERO 067	10.000 €	2336-GA-1--1-067	Garaje	-1	1	067		0	0	34,79
<input type="checkbox"/> TRASTERO: BLOQUE 1, PISO -1, NUMERO 18	2000 €	2336-TR-1--1-18	Trastero	-1	1	18		0	0	6,830
Subtotal	525.000 €									

<input type="checkbox"/> Select all	PVP	Product Code	Type	Portal	Block	Piso	Door	# rooms	# toilets	Built M²
<input type="checkbox"/> VIVIENDA: BLOQUE 1, ESCALERA 1, PISO 3, PUERTA E	768.000 €	2336-VI-1-1-3-E	Vivienda	1	1	3	E	4	0	181,14
<input type="checkbox"/> GARAJE: BLOQUE 1, PISO -1, NUMERO 063	10.000 €	2336-GA-1--1-063	Garaje	-1	1	063		0	0	34,79
<input type="checkbox"/> TRASTERO: BLOQUE 1, PISO -1, NUMERO 13	2000 €	2336-TR-1--1-13	Trastero	-1	1	13		0	0	6,640
Subtotal	780.000 €									
<input type="checkbox"/> VIVIENDA: BLOQUE 1, ESCALERA 2, PISO 3, PUERTA H	868.000 €	2336-VI-1-2-3-H	Vivienda	2	1	3	H	4	0	201,14
<input type="checkbox"/> GARAJE: BLOQUE 1, PISO -1, NUMERO 004	10.000 €	2336-GA-1--1-004	Garaje	-1	1	004		0	0	34,79
<input type="checkbox"/> TRASTERO: BLOQUE 1, PISO -1, NUMERO 25	2000 €	2336-TR-1--1-25	Trastero	-1	1	25		0	0	8,020
Subtotal	880.000 €									
<input type="checkbox"/> VIVIENDA: BLOQUE 1, ESCALERA 2, PISO 3, PUERTA I	708.000 €	2336-VI-1-2-3-I	Vivienda	2	1	3	I	4	0	196,64
<input type="checkbox"/> GARAJE: BLOQUE 1, PISO -1, NUMERO 005	10.000 €	2336-GA-1--1-005	Garaje	-1	1	005		0	0	34,79
<input type="checkbox"/> TRASTERO: BLOQUE 1, PISO -1, NUMERO 26	2000 €	2336-TR-1--1-26	Trastero	-1	1	26		0	0	7,830
Subtotal	720.000 €									

<input type="checkbox"/> Select all	PVP	Product Code	Type	Portal	Block	Piso	Door	# rooms	# toilets	Built M²
<input type="checkbox"/> VIVIENDA: BLOQUE 1, ESCALERA 1, PISO 3, PUERTA A	533.000 €	2336-VI-1-1-3-A	Vivienda	1	1	3	A	3	0	172,27
<input type="checkbox"/> GARAJE: BLOQUE 2, PISO -2, NUMERO 130	10.000 €	2336-GA-2--2-130	Garaje	-2	2	130				31,23
<input type="checkbox"/> TRASTERO: BLOQUE 1, PISO -2, NUMERO 35	2000 €	2336-TR-1--2-35	Trastero	-2	1	35				9,930
Subtotal	545.000 €									
<input type="checkbox"/> VIVIENDA: BLOQUE 1, ESCALERA 1, PISO 3, PUERTA B	533.000 €	2336-VI-1-1-3-B	Vivienda	1	1	3	B	3	0	167,31
<input type="checkbox"/> GARAJE: BLOQUE 1, PISO -1, NUMERO 056	10.000 €	2336-GA-1--1-056	Garaje	-1	1	056		0	0	34,79
<input type="checkbox"/> TRASTERO: BLOQUE 1, PISO -1, NUMERO 19	2000 €	2336-TR-1--1-19	Trastero	-1	1	19		0	0	6,700
Subtotal	545.000 €									

Kasia Wabia

Aria Home Invest S.L.U

+48 601 56 88 44

+34 674 427 308

hello@ariaspain.com

www.ariaspain.com

ARIA
— SPAIN —

Miembro de:
api

RAICV
4123

