



Denia

Two-storey apartment with garden

Offer ID: 13824

From 434000 €

*Price does not include VAT



Completion date:



Property Information

Type: Apartment

Number of bathrooms: 3

Number of bedrooms: 3

Area: 90.02 m²

City: Denia



Property Description

The first phase of the development will include 65 2 and 3 bedroom homes. Flats with terraces, flats with gardens, penthouses.

Experience a unique lifestyle in our residential community, where every detail has been designed with comfort and enjoyment in mind. Take a dip in the refreshing pool, work out in the gym, relax in the sauna and share unforgettable moments with family and friends in the social club. Residents will have access to this waterfront space where they can host their own events, park their bikes, store their boating equipment, and shower or take a dip in the pool after a dip in the sea.

But undoubtedly the main feature of the flats will be their large terraces. With their regular proportions, they are ideal spaces for outdoor living. The integration of the living room with these spacious terraces will unify your home as a living space where the inside meets the outside.

Flats with furnished kitchen and bathroom, with built-in air conditioning.



Advantages



Air conditioning



Private pool



Shared pool



Balcony/Terrace



Close to the sea



Parking



Garden



Gated community



What is included in the price



Furnished kitchen



Parking space



Shared pool



Air conditioning



Garden



Furnished bathroom



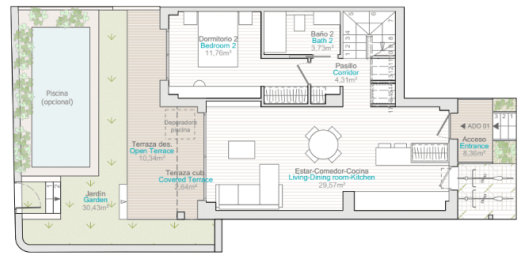
Gallery



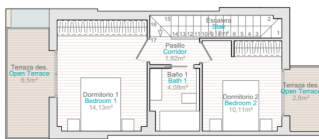


Planta baja | Ground Floor

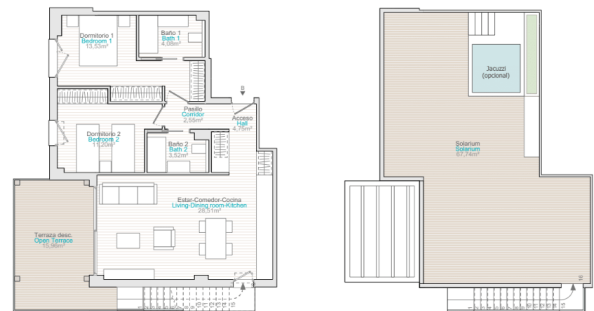
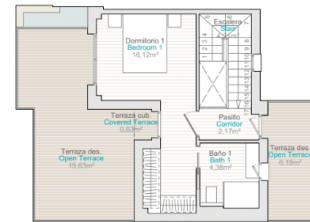
Planta baja | Ground Floor



Planta 1 | Floor 1



Planta 1 | Floor 1



Flase	Door	Apartment	Bedrooms	Bathrooms	Net vs Apartments	Ground terrace	Open terrace	Seturum	Carport	Build typ	TOTAL PRICE (NET vs No.)	NET	TOTAL PRICE (NET vs No.)
GP	01	AD-01	2	2	76,25	1,27	18,50	0	10,61	12,77	177.000	177.000	177.000
GP	03	AD-03	2	2+1	78,9	2,69	18,38	0	11,94	17,42	151.000	151.000	151.000
GP	05	AD-05	2	2	74,50	1,1	24,97	0	13,15	18,41	130.000	130.000	130.000
GP	06	AD-06	2	2	73,94	1,13	21,32	0	14,94	16,41	134.000	134.000	134.000
GP	08	AD-08	2	2	73,70	1,11	24,00	0	12,29	18,11	RESERVED		
GP	09	AD-09	2	2+1	78,5	2,69	18,38	0	10,62	12,35	RESERVED		
GP	10	AD-10	2	2	74,25	1,12	21,29	0	14,43	16,46	130.000	130.000	130.000
GP	12	AD-12	2	2	73,50	1,09	21,45	0	13,99	18,41	130.000	130.000	130.000
GP	13	AD-13	2	2	74,27	1,09	21,45	0	13,98	18,41	130.000	130.000	130.000
GP	14	AD-14	2	2	73,76	1,06	21,39	0	13,6	17,18	130.000	130.000	130.000
GP	15	AD-15	2	2	73,76	1,06	21,39	0	13,6	17,18	RESERVED		
GP	16	AD-16	2	2	73,76	1,06	21,39	0	13,6	17,18	RESERVED		
GP	17	AD-17	2	2	73,76	1,06	21,39	0	13,6	17,18	RESERVED		
GP	18	AD-18	2	2	73,76	1,06	21,39	0	13,6	17,18	RESERVED		
GP	19	AD-19	2	2	73,76	1,06	21,39	0	13,6	17,18	RESERVED		
GP	20	AD-20	2	2	73,76	1,06	21,39	0	13,6	17,18	RESERVED		
GP	21	AD-21	2	2	73,76	1,06	21,39	0	13,6	17,18	RESERVED		
GP	22	AD-22	2	2	73,76	1,06	21,39	0	13,6	17,18	RESERVED		
GP	23	AD-23	2	2	73,76	1,06	21,39	0	13,6	17,18	RESERVED		
GP	24	AD-24	2	2	73,76	1,06	21,39	0	13,6	17,18	RESERVED		
GP	25	AD-25	2	2	73,76	1,06	21,39	0	13,6	17,18	RESERVED		
GP	26	AD-26	2	2	73,76	1,06	21,39	0	13,6	17,18	RESERVED		
GP	27	AD-27	2	2	73,76	1,06	21,39	0	13,6	17,18	RESERVED		
GP	28	AD-28	2	2	73,76	1,06	21,39	0	13,6	17,18	RESERVED		
GP	29	AD-29	2	2	73,76	1,06	21,39	0	13,6	17,18	RESERVED		
GP	30	AD-30	2	2	73,76	1,06	21,39	0	13,6	17,18	RESERVED		
GP	31	AD-31	2	2	73,76	1,06	21,39	0	13,6	17,18	RESERVED		
GP	32	AD-32	2	2	73,76	1,06	21,39	0	13,6	17,18	RESERVED		
GP	33	AD-33	2	2	73,76	1,06	21,39	0	13,6	17,18	RESERVED		
GP	34	AD-34	2	2	73,76	1,06	21,39	0	13,6	17,18	RESERVED		
GP	35	AD-35	2	2	73,76	1,06	21,39	0	13,6	17,18	RESERVED		
GP	36	AD-36	2	2	73,76	1,06	21,39	0	13,6	17,18	RESERVED		
GP	37	AD-37	2	2	73,76	1,06	21,39	0	13,6	17,18	RESERVED		
GP	38	AD-38	2	2	73,76	1,06	21,39	0	13,6	17,18	RESERVED		
GP	39	AD-39	2	2	73,76	1,06	21,39	0	13,6	17,18	RESERVED		
GP	40	AD-40	2	2	73,76	1,06	21,39	0	13,6	17,18	RESERVED		
GP	41	AD-41	2	2	73,76	1,06	21,39	0	13,6	17,18	RESERVED		
GP	42	AD-42	2	2	73,76	1,06	21,39	0	13,6	17,18	RESERVED		
GP	43	AD-43	2	2	73,76	1,06	21,39	0	13,6	17,18	RESERVED		
GP	44	AD-44	2	2	73,76	1,06	21,39	0	13,6	17,18	RESERVED		
GP	45	AD-45	2	2	73,76	1,06	21,39	0	13,6	17,18	RESERVED		
GP	46	AD-46	2	2	73,76	1,06	21,39	0	13,6	17,18	RESERVED		
GP	47	AD-47	2	2	73,76	1,06	21,39	0	13,6	17,18	RESERVED		
GP	48	AD-48	2	2	73,76	1,06	21,39	0	13,6	17,18	RESERVED		
GP	49	AD-49	2	2	73,76	1,06	21,39	0	13,6	17,18	RESERVED		
GP	50	AD-50	2	2	73,76	1,06	21,39	0	13,6	17,18	RESERVED		
GP	51	AD-51	2	2	73,76	1,06	21,39	0	13,6	17,18	RESERVED		
GP	52	AD-52	2	2	73,76	1,06	21,39	0	13,6	17,18	RESERVED		
GP	53	AD-53	2	2	73,76	1,06	21,39	0	13,6	17,18	RESERVED		
GP	54	AD-54	2	2	73,76	1,06	21,39	0	13,6	17,18	RESERVED		
GP	55	AD-55	2	2	73,76	1,06	21,39	0	13,6	17,18	RESERVED		
GP	56	AD-56	2	2	73,76	1,06	21,39	0	13,6	17,18	RESERVED		
GP	57	AD-57	2	2	73,76	1,06	21,39	0	13,6	17,18	RESERVED		
GP	58	AD-58	2	2	73,76	1,06	21,39	0	13,6	17,18	RESERVED		
GP	59	AD-59	2	2	73,76	1,06	21,39	0	13,6	17,18	RESERVED		
GP	60	AD-60	2	2	73,76	1,06	21,39	0	13,6	17,18	RESERVED		
GP	61	AD-61	2	2	73,76	1,06	21,39	0	13,6	17,18	RESERVED		
GP	62	AD-62	2	2	73,76	1,06	21,39	0	13,6	17,18	RESERVED		
GP	63	AD-63	2	2	73,76	1,06	21,39	0	13,6	17,18	RESERVED		
GP	64	AD-64	2	2	73,76	1,06	21,39	0	13,6	17,18	RESERVED		
GP	65	AD-65	2	2	73,76	1,06	21,39	0	13,6	17,18	RESERVED		
GP	66	AD-66	2	2	73,76	1,06	21,39	0	13,6	17,18	RESERVED		
GP	67	AD-67	2	2	73,76	1,06	21,39	0	13,6	17,18	RESERVED		
GP	68	AD-68	2	2	73,76	1,06	21,39	0	13,6	17,18	RESERVED		
GP	69	AD-69	2	2	73,76	1,06	21,39	0	13,6	17,18	RESERVED		
GP	70	AD-70	2	2	73,76	1,06	21,39	0	13,6	17,18	RESERVED		
GP	71	AD-71	2	2	73,76	1,06	21,39	0	13,6	17,18	RESERVED		
GP	72	AD-72	2	2	73,76	1,06	21,39	0	13,6	17,18	RESERVED		
GP	73	AD-73	2	2	73,76	1,06	21,39	0	13,6	17,18	RESERVED		
GP	74	AD-74	2	2	73,76	1,06	21,39	0	13,6	17,18	RESERVED		
GP	75	AD-75	2	2	73,76	1,06	21,39	0	13,6	17,18	RESERVED		
GP	76	AD-76	2	2	73,76	1,06	21,39	0	13,6	17,18	RESERVED		
GP	77	AD-77	2	2	73,76	1,06	21,39	0	13,6	17,18	RESERVED		
GP	78	AD-78	2	2	73,76	1,06	21,39	0	13,6	17,18	RESERVED		
GP	79	AD-79	2	2	73,76	1,06	21,39	0	13,6	17,18	RESERVED		
GP	80	AD-80	2	2	73,76	1,06	21,39	0	13,6	17,18	RESERVED		
GP	81	AD-81	2	2	73,76	1,06	21,39	0	13,6	17,18	RESERVED		
GP	82	AD-82	2	2	73,76	1,06	21,39	0	13,6	17,18	RESERVED		
GP	83	AD-83	2	2	73,76	1,06	21,39	0	13,6	17,18	RESERVED		
GP	84	AD-84	2	2	73,76	1,06	21,39	0	13,6	17,18	RESERVED		
GP	85	AD-85	2	2	73,76	1,06	21,39	0	13,6	17,18	RESERVED		
GP	86	AD-86	2	2	73,76	1,06	21,39	0	13,6	17,18	RESERVED		
GP	87	AD-87	2	2	73,76	1,06	21,39	0	13,6	17,18	RESERVED		
GP	88	AD-88	2	2	73,76	1,06	21,39	0	13,6	17,18	RESERVED		
GP	89	AD-89	2	2	73,76	1,06	21,39	0	13,6	17,18	RESERVED		
GP	90	AD-90	2	2	73,76	1,06	21,39	0	13,6	17,18	RESERVED		
GP	91	AD-91	2	2	73,76	1,06	21,39	0	13,6	17,18	RESERVED		
GP	92	AD-92	2	2	73,76	1,06	21,39	0	13,6	17,18	RESERVED		
GP	93	AD-93	2	2	73,76	1,06	21,39	0	13,6	17,18	RESERVED		
GP	94	AD-94	2	2	73,76	1,06	21,39	0	13,6	17,18	RESERVED		
GP	95	AD-95	2	2	73,76	1,06	21,39	0	13,6	17,18	RESERVED		
GP	96	AD-96	2	2	73,76	1,06	21,39	0	13,6	17,18	RESERVED		
GP	97	AD-97	2	2	73,76	1,06	21,39	0	13,6	17,18	RESERVED		
GP	98	AD-98	2	2	73,76	1,06	21,39	0	13,6	17,18	RESERVED		
GP	99	AD-99	2	2	73,76	1,06	21,39	0	13,6	17,18	RESERVED		
GP	100	AD-100	2	2	73,76	1,06	21,39	0	13,6	17,18	RESERVED		

Kasia Wabia

Aria Home Invest S.L.U

+48 601 56 88 44

+34 674 427 308

hello@ariarealestate.eu

www.ariarealestate.eu

