



Quesada

## Villa with mountain view

Offer ID: 29816

**From 449500 €**

\*Price does not include VAT



Completion date:



### Property Information

**Type:** Villa

**Number of bathrooms:** 2

**Number of bedrooms:** 3

**Area:** 189.65 m<sup>2</sup>

**City:** Quesada



### Property Description

This modern villa is located just 50 metres from the prestigious La Marquesa golf course, offering the perfect combination of comfort and style in a picturesque setting. Thanks to its thoughtful design, it provides the perfect environment for relaxation and everyday living.

The property consists of three spacious bedrooms and two elegant bathrooms. The spacious terraces surrounding the garden and the 3x6 m swimming pool allow you to enjoy the Mediterranean climate all year round. As an added bonus, the solarium is the ideal place to relax and enjoy the surroundings.

The villa offers a large parking area and spacious interiors that combine modern design with functionality. Located just a few steps away from the shopping centre with its shops, supermarket and international restaurants, it provides convenience and access to all amenities.

The excellent location allows you to reach the charming town of Rojales in 5 minutes and the beautiful beaches of Guardamar in 15 minutes. The airport is 35 minutes away, making this an ideal location for both permanent residence and investment. The plot has an area of 248 m<sup>2</sup>, the built area is 190 m<sup>2</sup>.



## Advantages



Near golf courses



Private pool



Balcony/Terrace



Parking



Garden



Solarium



## What is included in the price



Furnished kitchen



Parking space



Garden



Pre-installed air conditioning

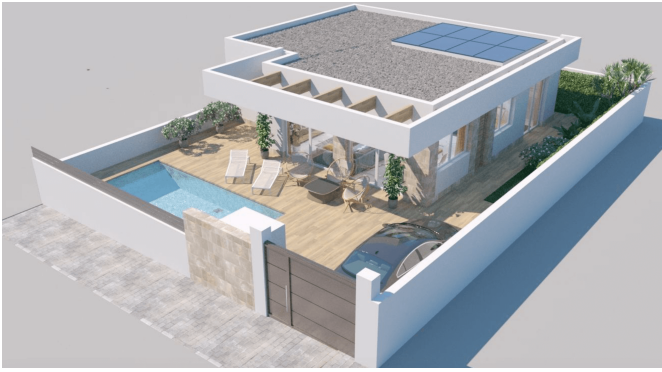


Furnished bathroom



## Gallery







#### PROMOCIÓN VEGAGOLF 33 villas (Precios de la primera fase - 9 villas)

|                         |   |                                |           |                    |       |         |         |   |           |
|-------------------------|---|--------------------------------|-----------|--------------------|-------|---------|---------|---|-----------|
| 1                       | V | PILOTO                         | 274,50 m2 | 229,10 m2          | 3 x 8 | 3       | 5       | TODOS INCLUIDOS, LLAVE EN MANO                | 556.000 € |
| 2                       | V | DOS PLANTAS MÁS SÓTANO ABIERTO | 250,50 m2 | 237,00 m2          | 3 x 6 | 3       | 3       | PANELES SOLARES, ELECTRODOMESTICOS Y MAMPARAS | 575.500 € |
| 3                       | V | UNA PLANTA                     | 248,00 m2 | 189,65 m2          | 3 x 6 | 2       | 3       | PANELES SOLARES, ELECTRODOMESTICOS Y MAMPARAS | VENDIDO   |
| 4                       | V | DOS PLANTAS MÁS SÓTANO ABIERTO | 250,50 m2 | 237,00 m2          | 3 x 6 | 3       | 3       | PANELES SOLARES, ELECTRODOMESTICOS Y MAMPARAS | 575.500 € |
| 5                       | V | UNA PLANTA                     | 248,00 m2 | 189,65 m2          | 3 x 6 | 2       | 3       | PANELES SOLARES, ELECTRODOMESTICOS Y MAMPARAS | 449.500 € |
| 6                       | V | DOS PLANTAS MÁS SÓTANO ABIERTO | 278,00 m2 | 237,00 m2          | 3 x 6 | 3       | 3       | PANELES SOLARES, ELECTRODOMESTICOS Y MAMPARAS | 598.500 € |
| 7                       | V | UNA PLANTA                     | 248,00 m2 | 189,65 m2          | 3 x 6 | 2       | 3       | PANELES SOLARES, ELECTRODOMESTICOS Y MAMPARAS | 449.500 € |
| 8                       | V | DOS PLANTAS MÁS SÓTANO ABIERTO | 327,00 m2 | 237,00 m2          | 3 x 6 | 3       | 3       | PANELES SOLARES, ELECTRODOMESTICOS Y MAMPARAS | 639.000 € |
| 9                       | V | UNA PLANTA                     | 248,00 m2 | 189,65 m2          | 3 x 6 | 2       | 3       | PANELES SOLARES, ELECTRODOMESTICOS Y MAMPARAS | 449.500 € |
| SOLARIUM OPCIONAL       | V | UNA PLANTA                     | —         | 95 m2              | —     | —       | —       | EXTRA   | 21.000 €  |
| SÓTANO OPCIONAL         | V | UNA PLANTA                     | —         | 84 m2 adicionales  | —     | 1 adic. | 2 adic. | EXTRA   | 90.000 €  |
| SÓTANO CON DISTRIBUCIÓN | V | DOS PLANTAS MÁS SÓTANO ABIERTO | —         | 120 m2 adicionales | —     | 1 adic. | 2 adic. | COCINA Y SALÓN COMEDOR                        | 75.000 €  |

**Kasia Wabia**

**Aria Home Invest S.L.U**

+48 601 56 88 44

+34 674 427 308

hello@ariaspain.com

www.ariaspain.com

**ARIA**  
— SPAIN —



Miembro de  
**api**

**RAICV**  
4123