



Benahavis
Villa with pool in Marbella

Offer ID: 18494

From 4334000 €

*Price does not include VAT



Completion date:



Property Information

Type: Villa

Number of bathrooms: 6

Number of bedrooms: 4

Area: 680.00 m²

City: Benahavis



Property Description

This is the first residential project developed by Lamborghini and DarGlobal in the south of

Spain. It is an exclusive gated estate consisting of 53 exclusive luxury villas, whose design was inspired by Lamborghini. Located in the hills of Benahavis, overlooking Marbella, it rises from the hills with endless panoramic views of the Mediterranean and the Andalusian landscape.

At the heart of the Villas' charm are The Painite Villas, a showcase of high-tech car lifts that reflects the innovative spirit of Lamborghini. These villas have been specifically designed for those who nurture their automotive passions, providing a seamless blend of luxury living and automotive excellence. Owners of The Painite Villas can enjoy the luxury of having their beloved vehicles transferred directly into their living spaces, redefining the garage concept and combining it with the aesthetics of high-end living

The development is located in the heart of Benahavís, the jewel of the Costa Del Sol, just 15 minutes from Marbella. It is a dynamic town with a plethora of stylish clubs, restaurants and hotels, as well as shopping districts, exclusive marinas and breathtaking beaches. The development is precisely located in the hills of Los Jaralillos, just minutes from the Mediterranean coast and in close proximity to 12 golf clubs, numerous Andalusian villages and Puerto Banús.



Advantages



Sea view



Near golf courses



Air conditioning



Private pool



Balcony/Terrace



Close to the sea



Parking



Elevator



Garden



Garage



Solarium



Gated community



What is included in the price



Furnished kitchen



Parking space



Air conditioning



Solarium



Smart home



Garden



Furnished bathroom



Gallery



4-BED

SQM	680 - 822
SOFT	7,320 - 8,848

PLOT SIZE

SQM	1,005 - 1,669
SOFT	10,818 - 17,965

Including total interior & outdoor built-up areas.

BASEMENT

4-BED

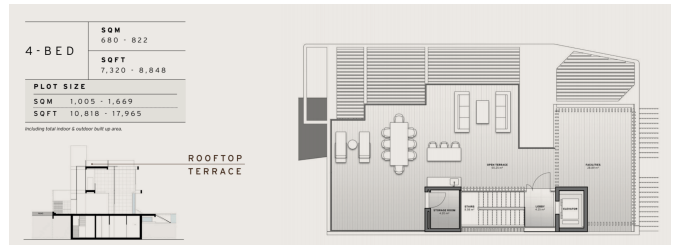
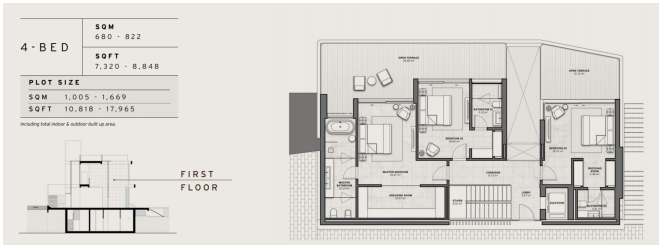
SQM	680 - 822
SOFT	7,320 - 8,848

PLOT SIZE

SQM	1,005 - 1,669
SOFT	10,818 - 17,965

Including total interior & outdoor built-up areas.

GROUND FLOOR



Kasia Wabia

Aria Home Invest S.L.U

+48 601 56 88 44

+34 674 427 308

hello@ariarealestate.eu

www.ariarealestate.eu

