



Alicante

Villa with private pool

Offer ID: 18265

From 1675000 €

*Price does not include VAT



Completion date:



Property Information

Type: Villa

Number of bathrooms: 3

Number of bedrooms: 4

Area: 387.91 m²

City: Alicante



Property Description

This luxury property is situated on a plot of approximately 900 m², facing south-west, so you can really enjoy the Spanish sun all day long, with stunning views of the golf course and the surrounding mountain ranges. This villa is arranged on two levels, with spacious and open living areas with natural light, where most rooms overlook the golf course.

On the ground floor there is a living room with large windows creating an atmospheric living space, with an adjoining open kitchen with island. The master bedroom offers beautiful views of the golf course with a separate dressing room and en-suite bathroom. The property also has a basement garage for 3 cars. Upstairs, there is a second master bedroom with en-suite bathroom and dressing room, accessed by a beautiful staircase from the living room. This bedroom can also be used as an office or study with direct access to two beautiful terraces. The lower terrace is an extension of the living room, with large sliding windows and also has a separate barbecue. The spacious garden is located right next to the golf course with a large private pool.

The beautiful Font del Llop golf resort is located in the heart of the Alicante province. It is located 20 minutes from Alicante-Elche International Airport, 25 minutes from the centre of Alicante, 20 minutes from the centre of Elche and 20 minutes from the beautiful sandy beach.



Advantages



Near golf courses



Air conditioning



Private pool



Balcony/Terrace



Parking



Garden



Garage



Solarium



Gated community



What is included in the price



Furnished kitchen



Parking space



Air conditioning



Solarium



Garden

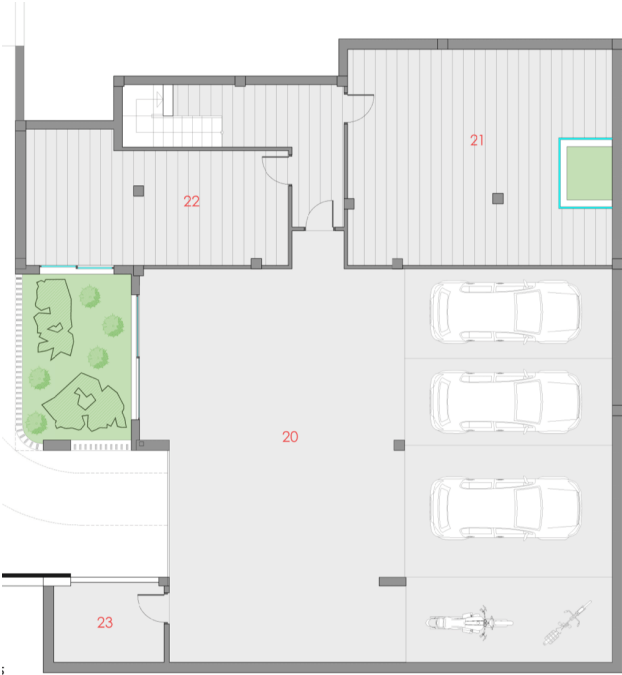


Furnished bathroom



Gallery





PRICES

VILLA EVEREST				
Nº Property	1	2	3	4
Nº Bedrooms	4	4	SOLD	SOLD
Nº Bathrooms	3	3		
Price	1,675,000.00 €	1,675,000.00 €		

SUPERFICIES EVEREST VILLA

TIPO A		
	m2	Planta
Vestibulo	13,20	Baja
Aseo	3,25	Baja
Lavadero-despensa	8,40	Baja
Paso	3,05	Baja
Dormitorio 3	12,75	Baja
Baño 1	5,40	Baja
Baño 2	7,70	Baja
Paso	4,85	Baja
Dormitorio 1	21,60	Baja
Dormitorio 2	12,75	Baja
Salon comedor	52,50	Baja
Paso	10,60	Primera
Baño	4,85	Primera
Vestidor	6,36	Primera
Estudio dormitorio 4	23,65	Primera
Sótano (garaje)	197	Sótano
Total Vivienda	387,91	
Terraza cubierta	39,00	Baja
Terraza descubierta	38,00	Primera
Terraza solarium	67,00	Primera
TOTAL	531,91	

Kasia Wabia

Aria Home Invest S.L.U

+48 601 56 88 44

+34 674 427 308

hello@ariarealestate.eu

www.ariarealestate.eu

