



Calpe

Appartement en bord de mer

Numéro d'offre: 17192

À partir de 470000 €

*Le prix n'inclut pas la TVA



Date de livraison:



Informations sur la propriété

Type: Appartement

Nombre de salles de bain: 1

Nombre de chambres: 1

Surface: 37.68 m²

Ville: Calpe



Description de la propriété











Une propriété exclusive avec accès direct à la plage. Des matériaux précieux et une végétation abondante assurent une parfaite harmonie entre les maisons et l'environnement

naturel dans lequel elles se trouvent. Des appartements et des penthouses avec de grands espaces lumineux et des terrasses spectaculaires de plus de 20 m2 dans la plupart des propriétés, qui offrent des vues magnifiques grâce à leurs balustrades en verre.

Appartements et penthouses avec 1, 2, 3 et 4 chambres à coucher et de magnifiques terrasses. Surplombant la mer sur la colline en face de la « Isla del Fraile » avec des vues spectaculaires. Les appartements ont été conçus pour profiter au maximum de la lumière naturelle et des vues spectaculaires sur la mer Méditerranée depuis leurs grandes terrasses.



Atouts

- | | | |
|---|--|--|
|  Première ligne de plage |  Climatisation |  Piscine partagée |
|  Balcon/Terrasse |  Proche de la mer |  Parking |
|  Ascenseur |  Jardin |  Garage |
|  Résidence fermée | | |

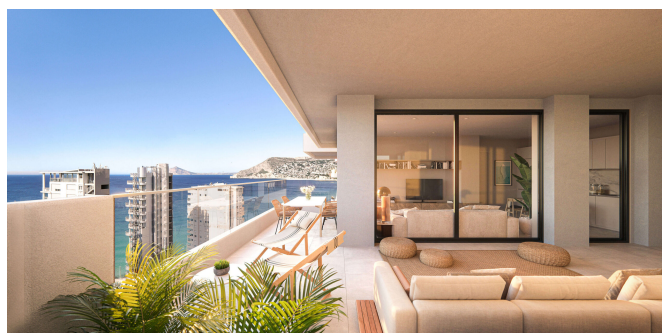


Ce qui est inclus dans le prix

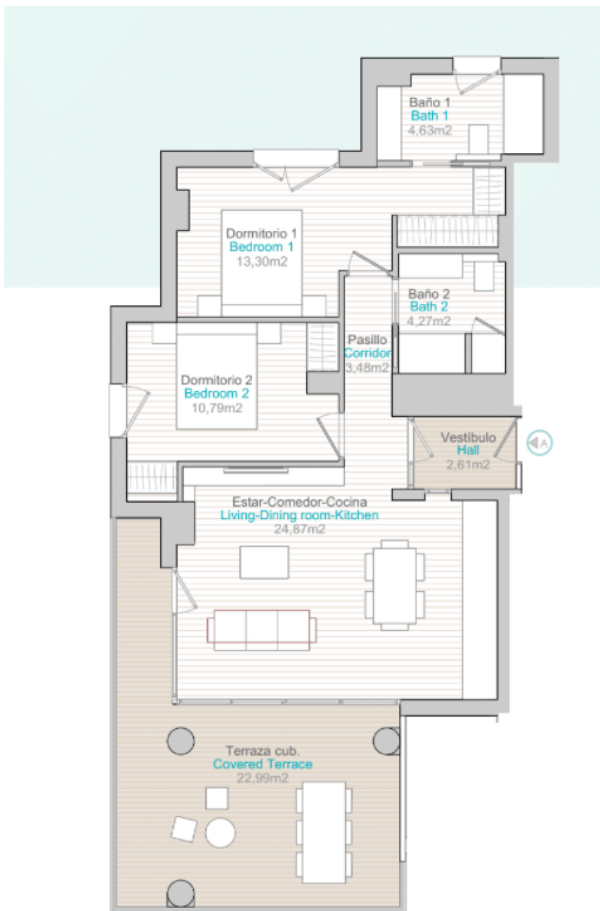
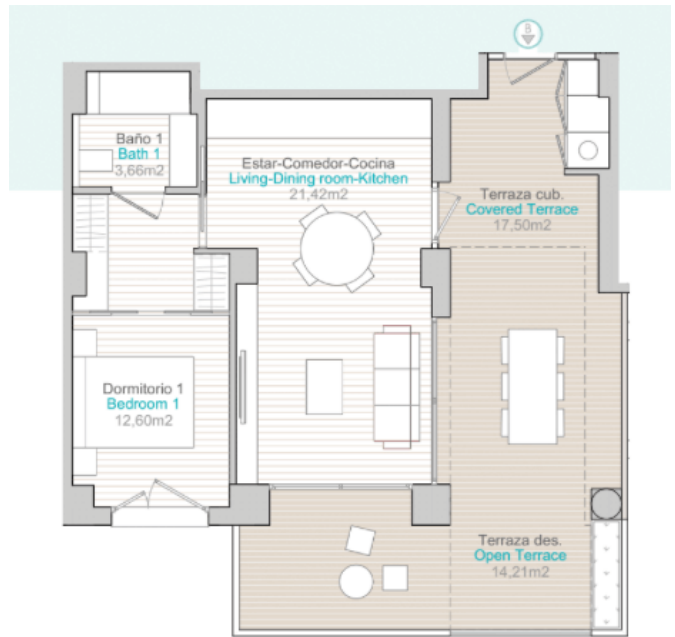
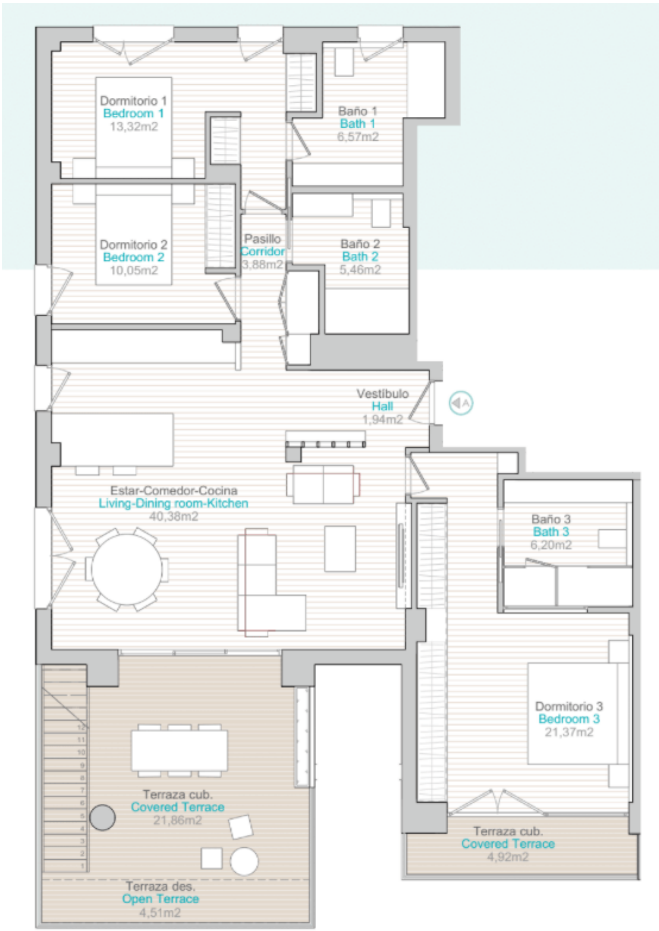
- | | |
|---|---|
|  Cuisine meublée |  Piscine partagée |
|  Climatisation |  Salle de bain meublée |



Galerie







Tower	Floor	Door	Apartment	Bedrooms	Net sq. Apartments	Instr build sqm	Covered terrace	Open terrace	Solarium	Total terrace	Total build sqm	Orientation	TOTAL PRICE [VAT net inc.]	VAT	TOTAL PRICE [VAT inc.]	
7	7	A	1.A	2	62,44	77,07	28,87	6,67	0,00	35,54	132,44	OESTE	RESERVED			
7	7	B	1.B	1	22,66	46,11	16,85	15,20	0,00	32,05	88,28	OESTE	RESERVED			
7	7	C	1.C	2	44,77	61,06	20,94	10,89	0,00	31,83	112,89	ESTE	RESERVED			
7	7	A	2.A	2	43,82	78,50	12,36	17,92	0,00	30,28	118,80	OESTE	RESERVED			
7	7	B	2.B	1	36,83	45,30	14,43	5,79	0,00	20,22	66,52	OESTE	RESERVED			
7	7	C	2.C	2	46,95	61,26	20,03	6,98	0,00	27,01	115,26	ESTE	RESERVED			
7	7	A	3.A	2	41,33	75,37	20,83	6,50	0,00	27,33	102,70	OESTE	RESERVED			
7	7	B	3.B	1	36,83	44,61	16,50	12,57	0,00	29,07	76,34	CENTRAL	RESERVED			
7	7	C	3.C	2	42,2	76,49	20,79	2,53	0,00	23,32	100,21	ESTE	RESERVED			
7	7	A	4.A	2	42,44	77,07	22,19	2,53	0,00	24,72	111,76	OESTE	RESERVED			
7	7	B	4.B	1	36,83	45,32	15,11	6,79	0,00	21,90	68,27	CENTRAL	RESERVED			
7	7	C	4.C	2	42,79	76,49	20,46	6,80	0,00	27,26	112,45	ESTE	RESERVED			
7	7	A	5.A	2	42,44	77,07	24,52	10,23	0,00	34,75	111,84	OESTE	RESERVED			
7	7	B	5.B	1	36,83	44,39	19,99	12,83	0,00	32,82	76,41	CENTRAL	RESERVED			
7	7	C	5.C	2	46,32	61,26	20,80	6,86	0,00	27,66	112,92	ESTE	RESERVED			
7	7	A	6.A	2	42,2	76,49	21,29	10,20	0,00	31,49	113,69	OESTE	RESERVED			
7	7	B	6.B	1	36,83	45,30	16,79	5,79	0,00	22,58	68,48	CENTRAL	RESERVED			
7	7	C	6.C	2	42,83	76,50	16,79	27,67	0,00	44,47	124,17	ESTE	RESERVED			
7	7	A	7.A	2	42,44	77,07	26,84	9,40	0,00	36,24	114,69	OESTE	RESERVED			
7	7	B	7.B	1	36,83	44,39	16,79	12,57	0,00	29,36	76,94	CENTRAL	RESERVED			
7	7	C	7.C	2	42,54	75,37	23,22	0,20	0,00	23,42	102,69	ESTE	RESERVED			
7	7	A	8.A	2	44,44	77,07	26,79	2,03	0,00	28,79	107,80	OESTE	RESERVED			
7	7	B	8.B	1	36,83	45,30	16,26	5,78	0,00	22,04	68,31	CENTRAL	RESERVED			
7	7	C	8.C	2	42,82	76,50	16,26	27,79	0,00	44,05	119,29	OESTE	RESERVED			
7	7	A	9.A	2	42,82	76,50	16,26	27,79	0,00	44,05	119,29	OESTE	RESERVED			
7	7	B	9.B	1	36,83	44,39	16,26	12,57	0,00	28,83	76,94	CENTRAL	RESERVED			
7	7	C	9.C	2	42,82	76,50	16,26	27,79	0,00	44,05	119,29	OESTE	RESERVED			
7	7	A	10.A	2	42,82	76,50	16,26	27,79	0,00	44,05	119,29	OESTE	RESERVED			
7	7	B	10.B	1	36,83	44,39	16,26	12,57	0,00	28,83	76,94	CENTRAL	RESERVED			
7	7	C	10.C	2	42,82	76,50	16,26	27,79	0,00	44,05	119,29	OESTE	RESERVED			
7	7	A	11.A	2	42,22	76,49	20,46	4,47	0,00	24,93	111,42	OESTE	RESERVED			
7	7	B	11.B	1	36,83	44,39	16,79	12,83	0,00	29,62	76,41	CENTRAL	RESERVED			
7	7	C	11.C	2	42,22	76,49	20,46	4,47	0,00	24,93	111,42	OESTE	RESERVED			
7	7	A	12.A	2	42,22	76,49	20,46	4,47	0,00	24,93	111,42	OESTE	RESERVED			
7	7	B	12.B	1	36,83	44,39	16,79	12,83	0,00	29,62	76,41	CENTRAL	RESERVED			
7	7	C	12.C	2	42,22	76,49	20,46	4,47	0,00	24,93	111,42	OESTE	RESERVED			
7	7	A	13.A	2	42,44	77,07	26,84	12,62	0,00	39,46	119,44	OESTE	RESERVED			
7	7	B	13.B	1	36,83	45,30	14,43	5,79	0,00	20,22	66,52	OESTE	RESERVED			
7	7	C	13.C	2	42,44	77,07	26,84	12,62	0,00	39,46	119,44	OESTE	RESERVED			
7	7	A	14.A	2	42,82	76,50	16,26	27,79	0,00	44,05	119,29	OESTE	RESERVED			
7	7	B	14.B	1	36,83	44,39	16,26	12,57	0,00	28,83	76,41	CENTRAL	RESERVED			
7	7	C	14.C	2	42,82	76,50	16,26	27,79	0,00	44,05	119,29	OESTE	RESERVED			
7	7	A	15.A	2	42,82	76,50	16,26	27,79	0,00	44,05	119,29	OESTE	RESERVED			
7	7	B	15.B	1	36,83	44,39	16,26	12,57	0,00	28,83	76,41	CENTRAL	RESERVED			
7	7	C	15.C	2	42,82	76,50	16,26	27,79	0,00	44,05	119,29	OESTE	RESERVED			
7	7	A	16.A	2	42,82	76,50	16,26	27,79	0,00	44,05	119,29	OESTE	RESERVED			
7	7	B	16.B	1	36,83	44,39	16,26	12,57	0,00	28,83	76,41	CENTRAL	RESERVED			
7	7	C	16.C	2	42,82	76,50	16,26	27,79	0,00	44,05	119,29	OESTE	RESERVED			
7	17	A	17.A	3	76,91	111,35	34,26	8,19	0,00	42,45	186,40	OESTE	RESERVED	800.000	85.000	935.000
7	17	C	17.C	2	72,65	90,20	24,40	0,20	0,00	24,60	139,40	OESTE	RESERVED			

1	1	A	1.8	2	62.64	72.07	26.87	6.50	0.00	20.87	124.64	OKZF	RESERVADO			
2	1	B	1.8	1	27.68	46.71	16.85	0.30	0.00	34.15	80.26	CENTRAL	RESERVADO			
3	1	C	1.2	2	66.7	81.26	26.94	16.00	0.00	21.83	122.89	ETTE	RESERVADO			
4	2	A	2.4	2	43.82	29.50	12.38	0.70	0.00	41.16	124.64	OKZF	RESERVADO			
5	2	B	1.8	1	70.81	45.20	14.63	5.70	0.00	20.42	61.71	CENTRAL	RESERVADO			
6	2	C	2.2	2	44.19	81.25	25.02	4.88	0.00	29.89	171.74	ETTE	RESERVADO			
7	3	A	3.0	2	81.34	75.37	24.81	6.00	0.00	21.37	102.70	OKZF	RESERVADO			
8	3	B	2.8	1	36.87	44.41	16.38	12.57	0.00	31.95	76.36	CENTRAL	RESERVADO			
9	3	C	2.2	2	62.2	76.49	23.99	7.71	0.00	37.40	171.89	ETTE	RESERVADO			
10	4	A	4.8	2	42.44	77.07	22.16	1.73	0.00	37.37	114.38	OKZF	RESERVADO			
11	4	B	4.8	1	36.81	45.32	15.11	6.70	0.00	26.40	76.20	CENTRAL	RESERVADO			
12	4	C	2.2	2	42.19	76.49	29.66	6.00	0.00	36.16	122.68	ETTE	RESERVADO			
13	5	A	5.8	2	62.44	77.07	24.12	10.15	0.00	34.27	171.84	OKZF	RESERVADO			
14	5	B	5.8	1	36.87	44.20	16.90	12.00	0.00	22.02	76.41	CENTRAL	RESERVADO			
15	5	C	2.2	2	46.12	81.05	22.80	6.86	0.00	31.36	152.47	ETTE	RESERVADO			
16	6	A	6.8	2	62.2	76.49	27.39	5.57	0.00	22.72	109.27	OKZF	RESERVADO			
17	6	B	6.8	1	36.82	45.30	15.79	5.79	0.00	21.08	46.38	CENTRAL	RESERVADO			
18	6	C	2.2	2	43.81	79.50	16.79	12.62	0.00	44.47	161.71	ETTE	RESERVADO			
19	7	A	7.8	2	62.44	77.07	26.44	17.71	0.00	46.15	122.22	OKZF	RESERVADO			
20	7	B	7.8	1	36.82	44.20	16.38	12.62	0.00	21.34	76.34	CENTRAL	RESERVADO			
21	7	C	2.2	2	41.34	75.37	27.32	0.00	0.00	27.32	102.49	ETTE	RESERVADO			
22	8	A	8.8	2	62.44	77.07	26.75	6.00	0.00	26.75	105.47	OKZF	RESERVADO			
23	8	B	8.8	1	36.82	45.30	15.26	5.15	0.00	20.47	45.71	CENTRAL	RESERVADO			
24	8	C	2.2	2	72.64	89.48	24.47	6.20	0.00	15.82	122.40	ETTE	RESERVADO			
25	9	A	9.8	2	61.82	76.50	12.38	10.72	0.00	41.10	122.60	OKZF	RESERVADO			
26	9	B	9.8	1	37.58	46.71	21.95	5.77	0.00	21.90	80.07	CENTRAL	RESERVADO			
27	9	C	2.2	2	72.84	80.25	22.77	6.44	0.00	31.47	124.43	ETTE	RESERVADO			
28	10	A	10.8	2	61.54	77.07	21.95	0.00	0.00	21.95	105.20	OKZF	RESERVADO			
29	10	B	10.8	1	36.82	44.20	16.79	12.58	0.00	21.95	76.54	CENTRAL	RESERVADO			
30	10	C	2.2	2	82.41	77.07	29.06	16.46	0.00	48.52	126.99	ETTE	RESERVADO			
31	11	A	11.8	2	72.82	89.48	26.12	10.01	0.00	36.54	126.27	OKZF	RESERVADO			
32	11	B	11.8	1	36.82	45.71	14.63	5.79	0.00	20.42	45.72	CENTRAL	RESERVADO			
33	11	C	2.2	2	62.44	77.07	22.02	5.72	0.00	26.70	105.62	ETTE	RESERVADO			
34	12	A	12.8	2	62.22	76.49	30.46	4.47	0.00	34.99	171.42	OKZF	RESERVADO			
35	12	B	12.8	1	36.81	44.20	15.79	12.00	0.00	21.82	76.47	CENTRAL	RESERVADO			
36	12	C	2.2	2	72.81	80.25	21.80	12.74	0.00	33.94	124.74	ETTE	RESERVADO			
37	13	A	13.8	2	62.44	77.07	26.40	12.92	0.00	42.37	118.44	OKZF	RESERVADO			
38	13	B	13.8	1	36.81	45.30	14.63	5.79	0.00	20.40	45.72	CENTRAL	RESERVADO			
39	13	C	2.2	2	72.81	89.48	22.44	1.01	0.00	22.45	122.11	ETTE	RESERVADO	600.000	60.000	748.000
40	14	A	14.8	2	72.82	80.25	21.80	8.47	0.00	37.47	124.64	OKZF	RESERVADO			
41	14	B	14.8	1	36.81	44.20	16.26	12.62	0.00	21.82	76.47	CENTRAL	RESERVADO			
42	14	C	2.2	2	43.81	79.50	15.89	27.62	0.00	43.81	123.27	ETTE	RESERVADO			
43	15	A	15.8	2	72.82	89.48	24.60	16.06	0.00	35.54	126.20	OKZF	RESERVADO			
44	15	B	15.8	1	36.88	44.67	14.63	5.79	0.00	20.42	46.07	CENTRAL	RESERVADO			
45	15	C	2.2	2	81.56	77.07	16.00	6.00	0.00	26.90	107.20	ETTE	RESERVADO			
46	16	A	16.8	2	72.82	80.25	22.06	9.38	0.00	31.40	124.43	OKZF	RESERVADO	725.000	72.500	874.500
47	16	B	16.8	1	36.82	44.60	20.99	2.48	0.00	20.97	76.30	CENTRAL	RESERVADO			
48	16	C	2.2	2	42.44	77.07	26.99	6.80	0.00	36.79	118.88	ETTE	RESERVADO			
49	17	A	17.8	2	76.11	81.26	19.06	6.17	0.00	27.22	118.28	OKZF	RESERVADO	810.000	81.000	931.000
50	17	B	17.8	1	37.66	45.70	17.16	4.60	0.00	33.06	70.36	CENTRAL	RESERVADO	410.000	41.000	511.000
51	17	C	2.2	2	17.81	40.22	11.40	4.12	16.20	38.32	120.74	ETTE	RESERVADO	810.000	81.000	931.000
52	18	A	18.8	2	120.11	120.11	120.11	0.00	0.00	120.11	120.11	OKZF	RESERVADO	1.810.000	181.000	2.051.000
53	18	B	18.8	1	120.11	120.11	120.11	0.00	0.00	120.11	120.11	OKZF	RESERVADO			

Kasia Wabia

Aria Home Invest S.L.U

+48 601 56 88 44

+34 674 427 308

hello@ariarealestate.eu

www.ariarealestate.eu

