



## Gran Alacant

### Lejlighed i Gran Alacant

Tilbudsnummer: 23614

**Fra 405000 €**

\*Prisen inkluderer ikke moms



Afleveringsdato:  
September 2025



#### Ejendomsinformation

**Type:** Lejlighed

**Antal badeværelser:** 2

**Antal soveværelser:** 3

**Areal:** 97.74 m<sup>2</sup>

**By:** Gran Alacant



## Ejendomsbeskrivelse

Iconic tilbyder luksuriøse 3-værelses lejligheder designet med den moderne livsstil i tankerne. Hver lejlighed har rummeligt interiør, store terrasser og high-end finish, masser af naturligt lys og en fantastisk udsigt over stranden, havet og haven.

De åbne opholdsrum omfatter et integreret køkken med førsteklasses hvidevarer og slanke Silestone-bordplader.

Badeværelserne er stilfuldt designet og udstyret med førsteklasses inventar.

Beboerne nyder godt af aircondition overalt, privat parkering og adgang til eksklusive faciliteter som swimmingpools, jacuzzi, fitnessområde og smukt anlagte haver.

For et ekstra gebyr kan din nye lejlighed kobles til Wiser-appen, som giver dig mulighed for nemt at fjernstyre mange aspekter af dit hjem, f.eks. belysning, persienner og sikkerhedssensorer, ved hjælp af Schneiders D-LIFE-kontakter.



## Fordele



Havudsigt



Nær golfbaner



Aircondition



Fælles pool



Altan/Terrasse



Nær havet



Parkering



## Hvad er inkluderet i prisen



Møbleret køkken



Parkeringsplads



Opbevaringsrum



Fælles pool



Aircondition



Møbleret badeværelse

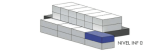


## Galleri



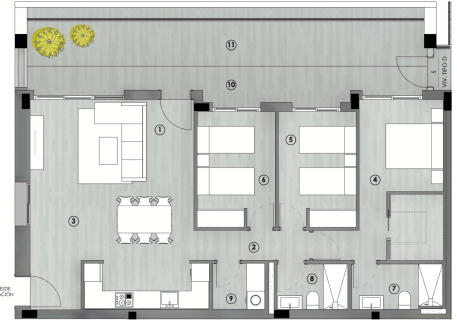
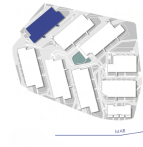
## VIVIENDA BL10 - 5

SUP. ÚTIL TOTAL 121.03m<sup>2</sup>  
SUP. CONST. TOTAL 137.93m<sup>2</sup>



Nº ESTANCIA	S.U.INT	S.C.INT
1	ACCESO	1.74m <sup>2</sup> 1.91m <sup>2</sup>
2	PASO	3.94m <sup>2</sup> 4.36m <sup>2</sup>
3	ESTAR-COMEDOR-COCINA	36.41m <sup>2</sup> 40.20m <sup>2</sup>
4	DORMITORIO 01	16.20m <sup>2</sup> 17.57m <sup>2</sup>
5	DORMITORIO 02	9.92m <sup>2</sup> 10.88m <sup>2</sup>
6	DORMITORIO 03	9.69m <sup>2</sup> 10.64m <sup>2</sup>
7	BANO 01	4.46m <sup>2</sup> 4.92m <sup>2</sup>
8	BANO 02	3.25m <sup>2</sup> 3.58m <sup>2</sup>
9	LAVANDERÍA	2.42m <sup>2</sup> 2.88m <sup>2</sup>
10		89.02m <sup>2</sup> 97.74m <sup>2</sup>

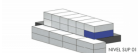
Nº ESTANCIA	S.U.EXT	S.C.EXT
10	TERRAZA CUBIERTA (100%)	12.40m <sup>2</sup> 13.07m <sup>2</sup>
11	TERRAZA DESCUBIERTA *	19.41m <sup>2</sup> 20.12m <sup>2</sup>
		30.21m <sup>2</sup> 40.19m <sup>2</sup>



BLOQUE 10

## VIVIENDA BL10 - 9

SUP. ÚTIL TOTAL 158.82m<sup>2</sup>  
SUP. CONST. TOTAL 173.98m<sup>2</sup>



Nº ESTANCIA	S.U.INT	S.C.INT
1	ACCESO	2.11m <sup>2</sup> 2.33m <sup>2</sup>
2	PASO	4.49m <sup>2</sup> 4.92m <sup>2</sup>
3	ESTAR-COMEDOR-COCINA	30.77m <sup>2</sup> 33.99m <sup>2</sup>
4	DORMITORIO 01	11.40m <sup>2</sup> 12.94m <sup>2</sup>
5	DORMITORIO 02	11.64m <sup>2</sup> 13.01m <sup>2</sup>
6	DORMITORIO 03	10.38m <sup>2</sup> 11.27m <sup>2</sup>
7	BANO 01	5.30m <sup>2</sup> 5.81m <sup>2</sup>
8	BANO 02	4.43m <sup>2</sup> 4.83m <sup>2</sup>
9	LAVANDERÍA	3.79m <sup>2</sup> 4.19m <sup>2</sup>
10		80.36m <sup>2</sup> 88.77m <sup>2</sup>

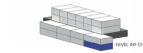
Nº ESTANCIA	S.U.EXT	S.C.EXT
10	TERRAZA CUBIERTA (100%)	21.05m <sup>2</sup> 21.35m <sup>2</sup>
11	TERRAZA DESCUBIERTA *	25.44m <sup>2</sup> 43.86m <sup>2</sup>
		78.46m <sup>2</sup> 85.21m <sup>2</sup>



BLOQUE 10

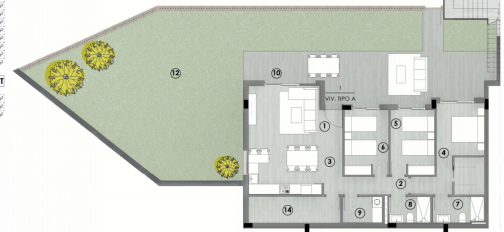
## VIVIENDA BL10 - 1

SUP. ÚTIL TOTAL 249.36m<sup>2</sup>  
SUP. CONST. TOTAL 267.40m<sup>2</sup>

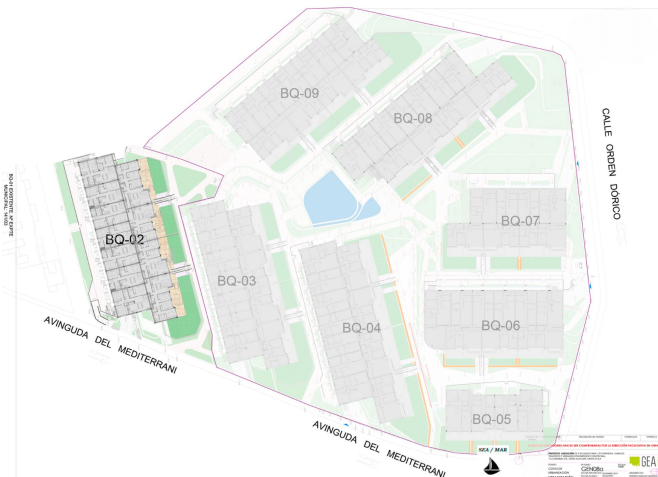


Nº ESTANCIA	S.U.INT	S.C.INT
1	ACCESO	1.79m <sup>2</sup> 1.90m <sup>2</sup>
2	PASO	4.07m <sup>2</sup> 4.43m <sup>2</sup>
3	ESTAR-COMEDOR-COCINA	30.21m <sup>2</sup> 33.43m <sup>2</sup>
4	DORMITORIO 01	16.33m <sup>2</sup> 17.79m <sup>2</sup>
5	DORMITORIO 02	9.79m <sup>2</sup> 10.62m <sup>2</sup>
6	DORMITORIO 03	9.79m <sup>2</sup> 10.62m <sup>2</sup>
7	BANO 01	4.49m <sup>2</sup> 4.92m <sup>2</sup>
8	BANO 02	3.41m <sup>2</sup> 3.71m <sup>2</sup>
9	LAVANDERÍA	3.49m <sup>2</sup> 3.89m <sup>2</sup>
10	ALMACÉN	8.24m <sup>2</sup> 8.98m <sup>2</sup>
11		92.29m <sup>2</sup> 102.28m <sup>2</sup>

Nº ESTANCIA	S.U.EXT	S.C.EXT
10	TERRAZA CUBIERTA (100%)	40.46m <sup>2</sup> 40.99m <sup>2</sup>
11	TERRAZA DESCUBIERTA *	116.43m <sup>2</sup> 125.34m <sup>2</sup>
		157.07m <sup>2</sup> 166.12m <sup>2</sup>



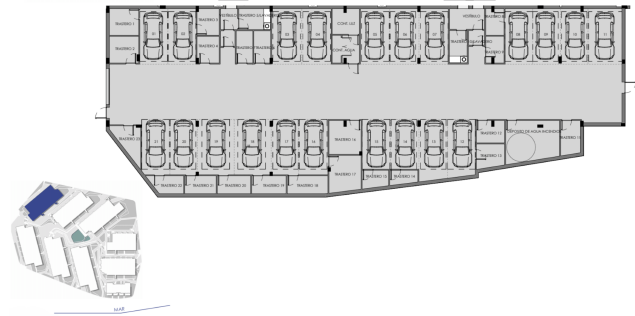
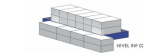
BLOQUE 10



### D1044 ICONIC FASE 4

Uti	Trastero	Garaje	Tipo Uti	Nº hab.	m <sup>2</sup> Conser.	m <sup>2</sup> Terraza	m <sup>2</sup> Jardín	m <sup>2</sup> solarium	Estado Uti	Precio	Fecha de entrega estimada
Door	Storage R.	Parking	Prop. Type	Bedrooms	Built m <sup>2</sup>	Terrace m <sup>2</sup>	Garden	solarium	Status	Price	completion date
B10-1-5	B10-TR-1	B10-GR-2	APARTAMENTO	3	97.74	32.01			Disponible	405.000,00 €	30/09/2025
B10-B1-1	B10-TR-23	B10-GR-5	APARTAMENTO	3	101.28	40.44	116.63		Disponible	435.000,00 €	30/09/2025
B10-B1-9	B10-TR-22	B10-GR-21	APARTAMENTO	3	88.77	78.46			Disponible	445.000,00 €	30/09/2025

## PARKING BL10



BLOQUE 10

**Kasia Wabia**

**Aria Home Invest S.L.U**

 +48 601 56 88 44

 +34 674 427 308

 hello@ariarealestate.eu

 www.ariarealestate.eu

